



**PB-31101-023B**  
Supersedes PB-31101-023A

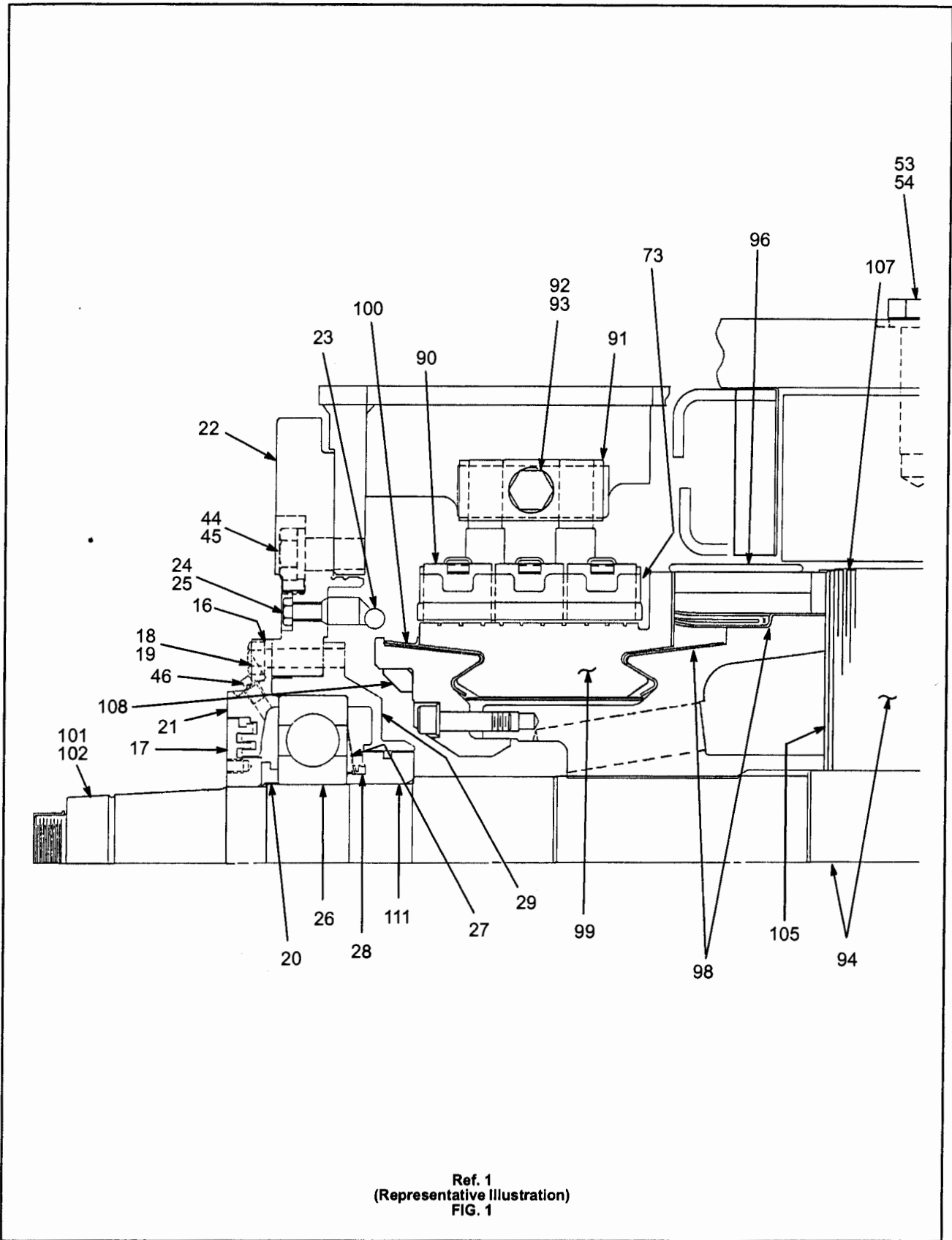
## **GE Renewal Parts**

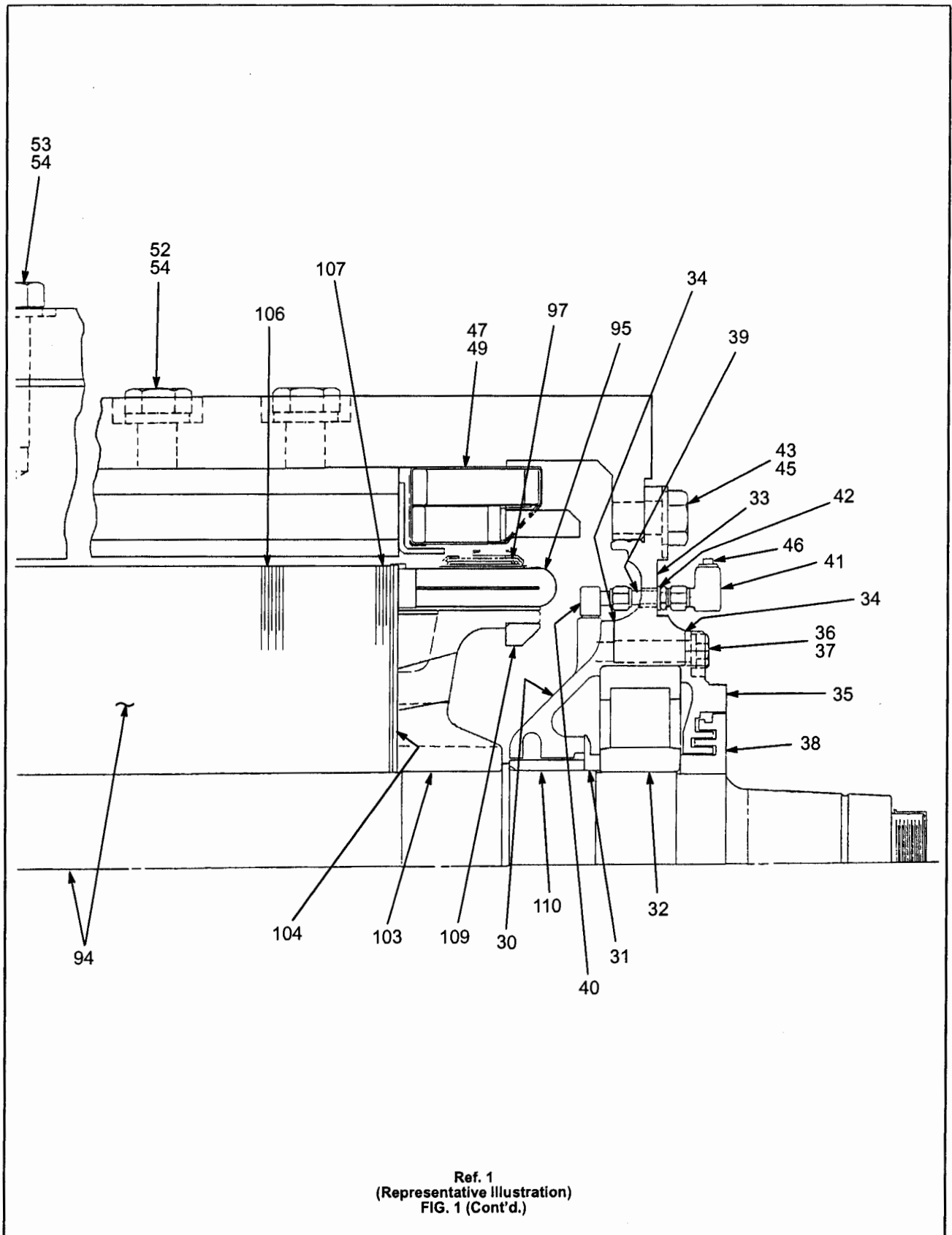
*Use original equipment parts for reliability*

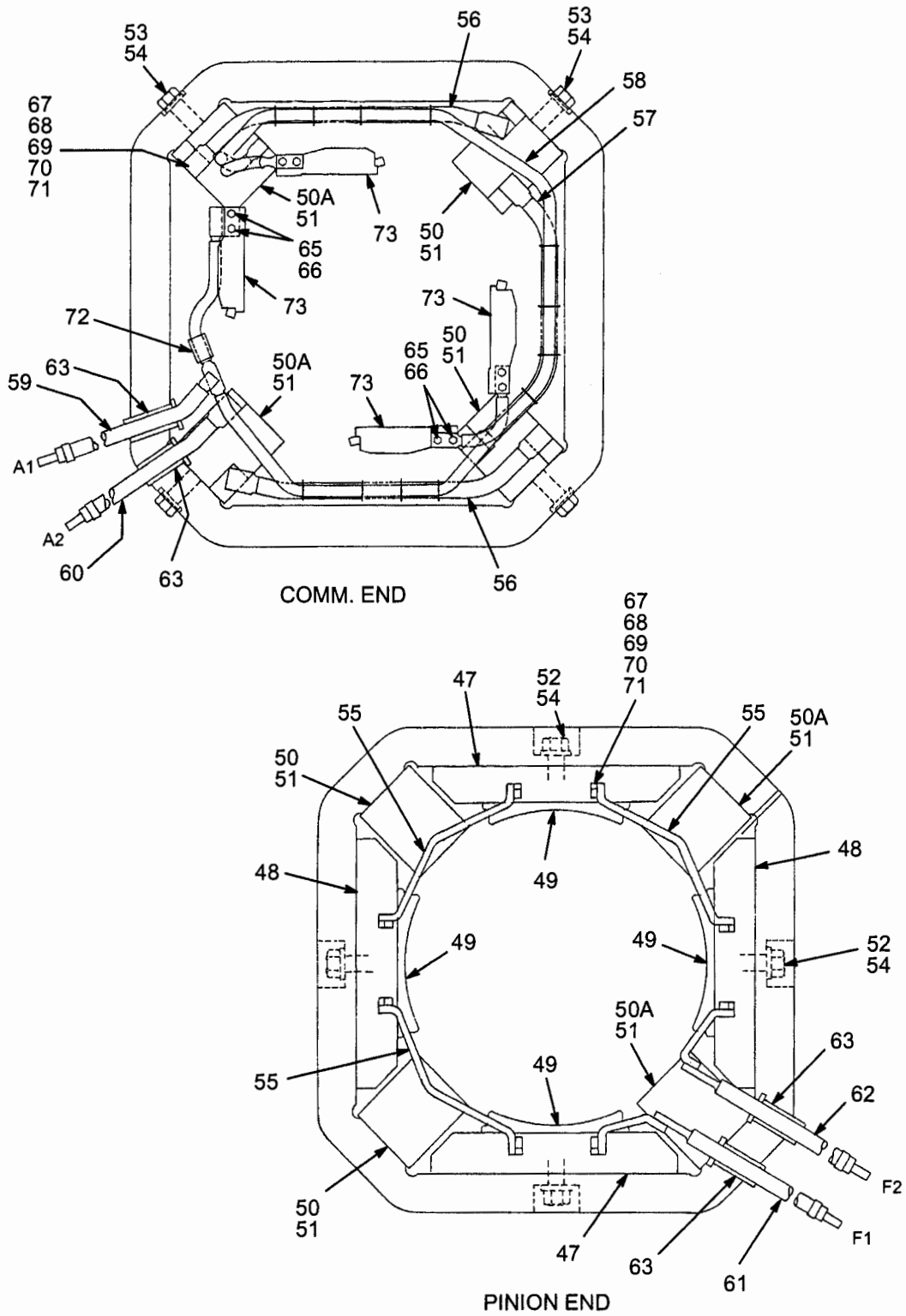
**PARTS BULLETIN**

**DRILLING MOTOR  
MODEL 5GE752AUT2**

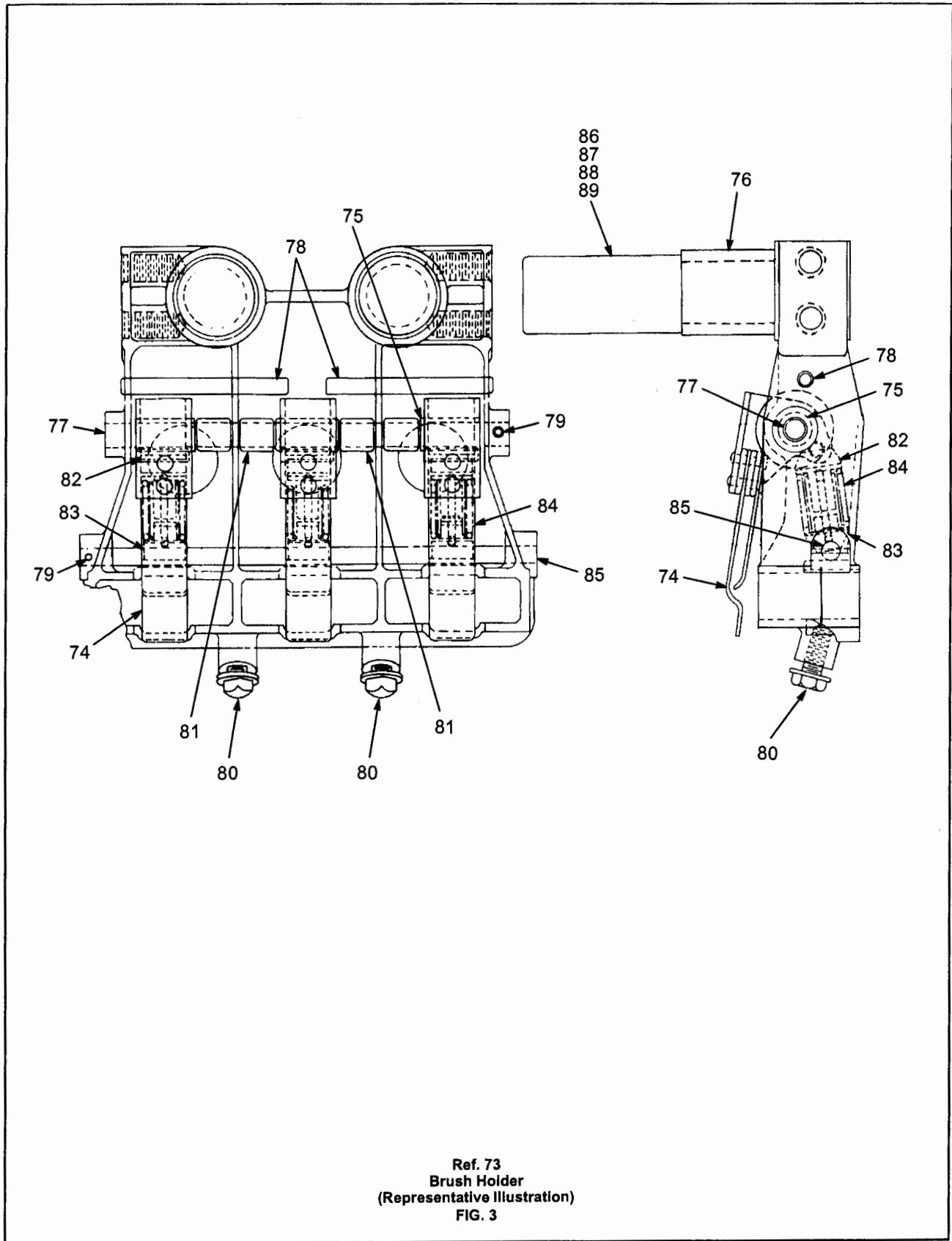
JANUARY 18, 2000







Field Coils and Connections  
(Representative Illustration)  
FIG. 2



Ref. 73  
Brush Holder  
(Representative Illustration)  
FIG. 3

DRILLING MOTOR  
MODEL 5GE752AUT2

| FIG. NO. | REF. NO. | PART NO.     | QUANT REQ. COL. A | DESCRIPTION                                   |
|----------|----------|--------------|-------------------|---|
| 1        | 1        | 5GE752AUT2   | 1                 | DRILLING MOTOR                                |
|          |          | 41C636513G1  | 1                 | INSPECTION COVER, UPPER                       |
|          |          | 41C636513P11 | 2                 | GASKET, 9 3/4 IN LONG, 1/4 IN THICK           |
|          |          | 41C636513P12 | 2                 | GASKET, 11 1/4 IN LONG, 1/4 IN THICK          |
|          |          | 497A806P57   | AR                | *CEMENT                                       |
|          |          | 41D732878G4  | 1                 | INSPECTION COVER, LOWER                       |
|          |          | 41D732878P7  | 2                 | GASKET, 9/16 IN X 11 9/32 IN LONG, 1/4 IN THK |
|          |          | 41D732878P8  | 2                 | GASKET, 9/16 IN X 9 1/2 IN LONG, 1/4 IN THK   |
|          |          | 497A806P57   | AR                | *CEMENT                                       |
|          |          | 41A239914G1  | 1                 | INSPECTION COVER, HAND HOLE                   |
|          |          | 41A239914P2  | 2                 | GASKET, 9 1/4 IN LONG, 1/4 IN THICK           |
|          |          | 41A239914P3  | 2                 | GASKET, 8 1/8 IN LONG, 1/4 IN THICK           |
|          |          | 497A806P57   | AR                | *CEMENT                                       |
|          |          | N14P29016B13 | 12                | *BOLT, HEX HD, 1/2 IN-13, 1 IN LONG           |
|          |          | N405P45B13   | 12                | LOCKWASHER, 1/2 IN                            |
| 1        | 16       | 493A546P1    | 1                 | GASKET, 14 11/16 IN OD                        |
| 1        | 17       | 493A540P1    | 1                 | SLEEVE, 9 19/32 IN OD                         |
| 1        | 18       | N22P33044    | 8                 | BOLT, HEX HD, 5/8 IN-11, 2 3/4 IN LONG        |
| 1        | 19       | N405P47B13   | 8                 | LOCKWASHER, 5/8 IN                            |
| 1        | 20       | 41A237207P1  | 1                 | SPACER, 6 5/8 IN OD                           |
| 1        | 21       | 41B537478P1  | 1                 | BEARING CAP, COMMUTATOR END                   |
| 1        | 22       | 41C635474G2  | 1                 | FRAME HEAD                                    |
| 1        | 23       | 481A560G1    | 1                 | FLASH RING ASSEMBLY                           |
| 1        | 24       | N22P29020B13 | 6                 | BOLT, HEX HD, 1/2 IN-13, 1 1/4 IN LONG        |
|          |          | DELETED      | AR                | NOT USED                                      |
| 1        | 26       | 8864950P195  | 1                 | BALL BEARING                                  |
| 1        | 27       | 41A239929P3  | 1                 | SEAL RING                                     |
| 1        | 28       | 41A330363P1  | 1                 | V-RING SEAL                                   |
| 1        | 29       | 41C637267P1  | 1                 | BEARING HOUSING                               |
| 1        | 30       | 41C636257P4  | 1                 | BEARING CAP, PINION END                       |
| 1        | 31       | 4713640P1    | 1                 | FLINGER, 8 1/4 IN OD                          |
| 1        | 32       | 8864951P167  | 1                 | ROLLER BEARING                                |
| 1        | 33       | 41C636958P1  | 1                 | FRAME HEAD                                    |
| 1        | 34       | 4732906P1    | 2                 | GASKET, 15 IN OD                              |
| 1        | 35       | 2739317P1    | 1                 | BEARING CAP                                   |
| 1        | 36       | N22P33056    | 8                 | BOLT, HEX HD, 5/8 IN-11, 3 1/2 IN LONG        |
| 1        | 37       | N405P47B13   | 8                 | LOCKWASHER, 5/8 IN                            |
| 1        | 38       | 4732351P1    | 1                 | SLEEVE, 9 7/32 IN OD                          |
| 1        | 39       | 41A330230P3  | 1                 | TUBE UNION, BULKHEAD                          |
| 1        | 40       | 41A330230P4  | 1                 | SWIVEL ADAPTER, 90 DEG                        |
| 1        | 41       | 41A330283P1  | 1                 | FITTING, 90 DEG                               |
| 1        | 42       | N402P46B13   | 2                 | WASHER, 9/16 IN                               |

\* ADDED OR CHANGED SINCE LAST ISSUE.

DRILLING MOTOR  
MODEL 5GE752AUT2

PB-31101-023B  
Supersedes PB-31101-023A

| FIG. NO. | REF. NO. | PART NO.      | QUANT REQ. COL. A | DESCRIPTION  |
|----------|----------|---------------|-------------------|--|
| 1        | 43       | N22P39032     | 4                 | BOLT, HEX HD, 1 IN-8, 2 IN LONG                    |
| 1        | 44       | N22P39036     | 7                 | BOLT, HEX HD, 1 IN-8, 2 1/4 IN LONG                |
| 1        | 45       | 41B537660P20  | 11                | WASHER, FLAT, 1.063 IN ID, 2 IN OD                 |
| 1        | 46       | N5700P31      | 3                 | PIPE PLUG, SQ HD, 1/4 IN                           |
| 1,2      | 47       | 41E903691G7   | 2                 | *COIL WITH POLE PIECE, EXCITING                    |
| 2        | 48       | 41E903691G8   | 2                 | *COIL WITH POLE PIECE, EXCITING                    |
| 1,2      | 49       | 41B537112G2   | 4                 | POLE PIECE, EXCITING COIL                          |
| 2        | 50       | 41C636992G5   | 2                 | *COIL WITH POLE PIECE, COMMUTATING                 |
| 2        | 50A      | 41C636992G7   | 2                 | *COIL WITH POLE PIECE, COMMUTATING                 |
| 2        | 51       | 41B535341G1   | 4                 | POLE PIECE, COMMUTATING COIL                       |
| 1,2      | 52       | 4713691P2     | 12                | BOLT, HEX HD, 1 1/4 IN-7, 3 3/4 IN LONG            |
| 1,2      | 53       | 41A239559P1   | 12                | BOLT, HEX HD, 1 1/4 IN-12, 4 IN LONG               |
| 1,2      | 54       | 41B537660P22  | 24                | WASHER, FLAT, 1.313 IN ID, 2.500 IN OD             |
| 2        | 55       | 41C636867G3   | 3                 | CONNECTION STRAP                                   |
| 2        | 56       | 41B537185G2   | 2                 | #CABLE ASSEMBLY                                    |
| 2        | 57       | 41B537185G1   | 1                 | #CABLE ASSEMBLY                                    |
| 2        | 58       | 41C636558G1   | 1                 | #CABLE ASSEMBLY                                    |
| 2        | 59       | 41C637107G1   | 1                 | #CABLE ASSEMBLY A 1                                |
| 2        | 60       | 41C637107G6   | 1                 | #CABLE ASSEMBLY A 2                                |
| 2        | 61       | 41C637107G4   | 1                 | #CABLE ASSEMBLY F 1                                |
| 2        | 62       | 41C637107G5   | 1                 | #CABLE ASSEMBLY F 2                                |
| 2        | 63       | 481A539P40    | 4                 | *CABLE BUSHING, 1 9/16 IN ID, RUBBER               |
|          |          | DELETED       | 2                 | NOT USED   |
| 2        | 65       | N22P27016B13  | 8                 | BOLT, HEX HD, 7/16 IN-14, 1 IN LONG                |
| 2        | 66       | N405P44B13    | 8                 | LOCKWASHER, 7/16 IN                                |
| 2        | 67       | 41A231281P48  | AR                | *BRAZING STRIP, 1 IN X 1 1/2 IN LONG               |
| 2        | 68       | 41A330300P2   | AR                | #BRAZING ALLOY, 0.050 X 0.062 IN                   |
| 2        | 69       | 41A239176P443 | AR                | SILASTIC PUTTY                                     |
| 2        | 70       | 41A239176P133 | AR                | SILICONE TAPE, 0.015 IN THICK, 1 IN WIDE           |
| 2        | 71       | 41A239176P22  | AR                | GLASS TAPE, 0.007 IN THICK, 1 IN WIDE              |
| 2        | 72       | 41A231248P2   | 1                 | PAD, 5/32 IN, 3/4 IN, 2 1/4 IN                     |
| 1,2,3    | 73       | 41C632667G6   | 4                 | BRUSH HOLDER ASSEMBLY                              |
| 3        | 74       | 41B530659G2   | 12                | PRESSURE ARM                                       |
| 3        | 75       | 41A231370P2   | 12                | BUSHING, 1.063 IN LONG                             |
| 3        | 76       | 186V831P1     | 8                 | SLEEVE, 1 5/32 IN ID, 1 1/2 IN LONG                |
| 3        | 77       | 41A231378P2   | 4                 | PIN, 3/8 IN DIA, 6 5/8 IN LONG                     |
| 3        | 78       | N509P2548     | 8                 | PIN, SPRING DOWEL, 1/4 IN DIA, 3 IN LONG           |
| 3        | 79       | N509P912      | 8                 | PIN, SPRING DOWEL, 3/32 IN DIA, 3/4 IN LONG        |
| 3        | 80       | 41A230733P7   | 8                 | BOLT W/WASHERS, HEX HD SL, 5/16 IN-18, 3/4 IN LONG |
| 3        | 81       | 41A231370P6   | 16                | BUSHING, 0.575 IN LONG                             |
| 3        | 82       | 41A330248P1   | 12                | SPRING SEAT  |

\* ADDED OR CHANGED SINCE LAST ISSUE.  
# WELD OR BRAZE IN POSITION.

| FIG. NO. | REF. NO. | PART NO.     | QUANT REQ. COL. A | DESCRIPTION                                   |
|----------|----------|--------------|-------------------|---|
| 3        | 83       | 41A233867G4  | 12                | SPRING SEAT WITH PIN                          |
| 3        | 84       | 41B537844G1  | 12                | SPRING SET ASSEMBLY                           |
| 3        | 85       | 41A233880P1  | 4                 | PIN, 7 7/16 IN LONG                           |
| 3        | 86       | 41B535754G28 | 8                 | BRUSH HOLDER STUD, MOLDED (0.002 IN OVERSIZE) |
| 3        | 87       | 41B535754G29 | 8                 | BRUSH HOLDER STUD, MOLDED (0.004 IN OVERSIZE) |
| 3        | 88       | 41B535754G30 | 8                 | BRUSH HOLDER STUD, MOLDED (0.006 IN OVERSIZE) |
| 3        | 89       | 41B535754G31 | 8                 | BRUSH HOLDER STUD, MOLDED (0.008 IN OVERSIZE) |
| 1        | 90       | 41B537963P1  | 12                | CARBON BRUSH                                  |
| 1        | 91       | 2733755P7    | 4                 | BRUSH HOLDER SUPPORT CLAMP                    |
| 1        | 92       | N22P37052    | 4                 | BOLT, HEX HD, 7/8 IN-9, 3 1/4 IN LONG         |
| 1        | 93       | 41B537660P25 | 4                 | WASHER, FLAT, 0.968 IN ID, 1.375 IN OD        |
| 1        | 94       | 41D735775G5  | 1                 | *ARMATURE ASSEMBLY                            |
| 1        | 95       | 41D735370G6  | 1                 | *ARMATURE REWIND KIT                          |
| 1        | 96       | 41A239176P64 | AR                | GLASS TAPE, 0.014 IN THICK, 3/4 IN WIDE       |
| 1        | 97       | 41A330208P10 | AR                | WIRE, 0.072 IN DIA                            |
| 1        | 98       | 41A239176P62 | AR                | GLASS TAPE, 0.014 IN THICK, 3/8 IN WIDE       |
| 1        | 99       | 41B537889G2  | 1                 | COMMUTATOR, SEASONED                          |
| 1        | 100      | 41B537080P1  | 1                 | =TEFLON BAND (CONTINUOUS)                     |
| 1        | 101      | 41C636927G1  | 1                 | ARMATURE SHAFT                                |
| 1        | 102      | 84A204808P1  | 2                 | *SET SCREW, HEX SOC HD, 3/8 IN-24, SELF-LOCK  |
| 1        | 103      | 41B537605P4  | 1                 | ARMATURE HEAD                                 |
| 1        | 104      | 41A239323G1  | 1                 | PUNCHING, END                                 |
| 1        | 105      | 41A330418G1  | 1                 | PUNCHING, END                                 |
| 1        | 106      | 41B537164P2  | 553               | *PUNCHING, MAIN                               |
| 1        | 107      | 41B537165P3  | 40                | *PUNCHING, STEP BACK                          |
| 1        | 108      | 2766829ADP24 | AR                | #BALANCE WEIGHT, 13 IN OD                     |
| 1        | 109      | 2766829ADP26 | AR                | #BALANCE WEIGHT, 14 3/4 IN OD                 |
| 1        | 110      | 41A239330P1  | 1                 | COLLAR  |
| 1        | 111      | 41A330312P1  | 1                 | SLEEVE  |
|          |          | 493A471P1    | 2                 | *HUB, 9.120 IN OD                             |

\* ADDED OR CHANGED SINCE LAST ISSUE.

# WELD OR BRAZE IN POSITION.

=ADDITIONAL MATERIAL IS REQUIRED TO INSTALL THE CONTINUOUS LOOP TEFLON BAND. SEE APPLICATION INSTRUCTIONS, GEK-76278.

- END OF PARTS BULLETIN -