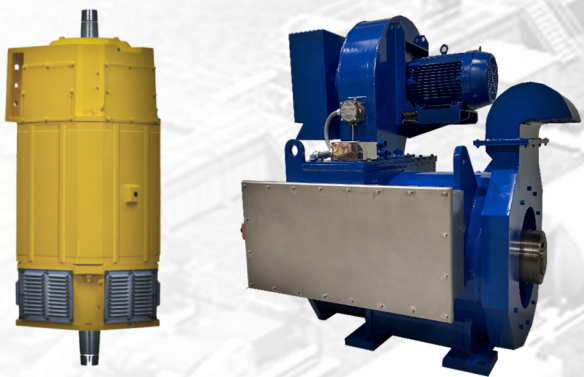


SINGLE SOURCE FOR NORTH AMERICA



PRODUCT AND SERVICE GUIDE

OUR CUSTOMERS RELY ON US FOR INNOVATIVE ENGINEERING,
QUALITY PRODUCTS AND CONSISTENT SERVICE.



www.gulfelectroquip.com | sales@gulfelectroquip.com



CONTENTS

GULF ELECTROQUIP

Overview

Certification

Quality Assurance

PRODUCTS

DRILLMAX400 Top Drive Motor

DRILLMAX600 Top Drive Motor

DRILLMAX2000 Drilling Motor

QUIET CLEAN Motor Blower

whisperclean Motor Blower

Junction Boxes

QUICKCONNECT1000

Safety Products

Parts

Emergency Motor Inventory

SERVICES

Repair & Remanufacturing

Stator Upgrade

Technology

Testing

Machine Shop

Winding

Inspection & Assembly

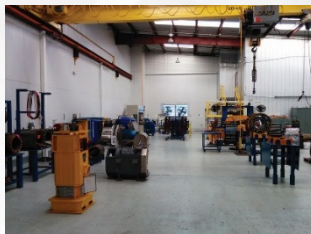
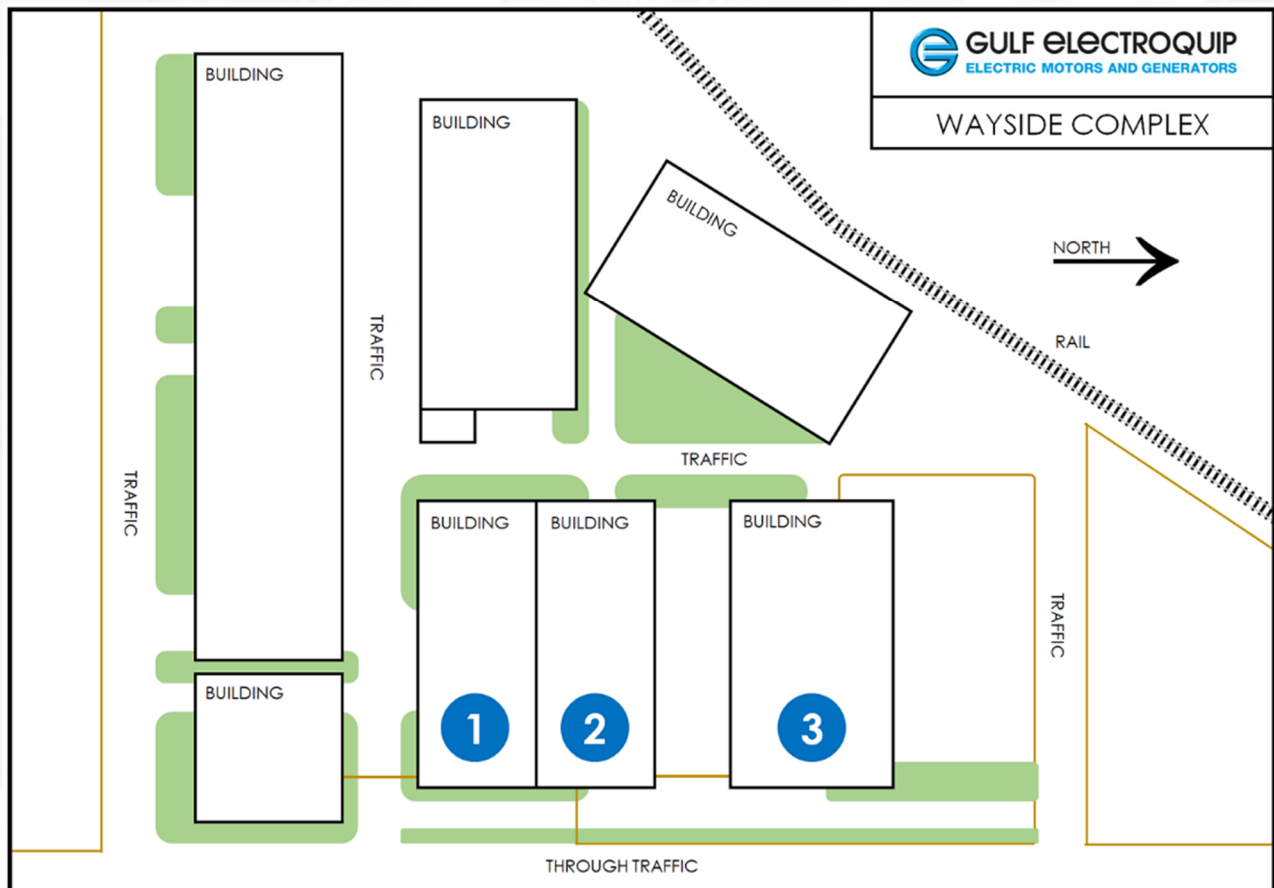
©2023 Gulf Electroquip, LTD. All rights reserved. Product specifications and availability are subject to change without notice. Statements contained herein are not intended to create any warranty - expressed or implied. Product trade names, marks or logos are the property of their respective owners. All photography and illustrations are copyrighted by Gulf Electroquip, LTD. The information contained in this document is for general information purposes only. The information is provided by Gulf Electroquip Ltd. and while we endeavor to keep the information up to date and correct, we make no representations or warranties of any kind, express or implied, about the completeness, accuracy, reliability, suitability or availability with respect to the document or the information, products, services, or related graphics contained in this document for any purpose. Any reliance you place on such information is therefore strictly at your own risk. In no event will we be liable for any loss or damage including without limitation, indirect or consequential loss or damage, or any loss or damage whatsoever arising from loss of data or profits arising out of, or in connection with, the use of this document.



GEQ OVERVIEW 1

GENERAL STATISTICS

- Established in 1956
- Main Plant: Over 50,000 m²
- Crane capacity up to >25,000 kg
- Production Facilities:
 - Center front three buildings (1,2 & 3) are main production facility of 20,000 m²
 - Remaining buildings are for storage and available for expansion
- Factory authorized repair facility for major global OEMs
- Privately held company structure



GEQ OVERVIEW 2

PRODUCTS

New, Repair & Remanufactured

Motors & Generators:

- AC Induction Motors
- AC VFD Motors
- AC Wound Rotor Motors
- AC Induction Generator
- AC Synchronous Motor
- AC Synchronous Generator
- DC Motors
- DC Generators

Power:

- AC: to 30,000+ HP/ 25,000+ kw
- DC: to 10,000+ HP/ 7,000+ kw

Voltages:

- AC: 100 - 13,800 V
- DC: 100 - 1,000 VDC

Speed:

- AC: to 7000 RPM
- DC: to 3000 RPM

Frequency:

- 50, 60 Hz and Variable

Enclosure:

- Open to XP classification

Orientation:

- Horizontal, Vertical & Tilt

Bearings:

- Sleeve
- Ball & Roller
- Insulated Through High Capacity Vertical Thrust

Shaft:

- Single, Double & Auxiliaries
- High Alloy & Standard Steels

Cooling:

- Air and Water Cooled
- Self, Forced and Non-ventilated

Seals:

- Standard Through High Spec

Excitation:

- Brush and Brushless

Patented Cleaning
Motor Blowers

- Filter-less Cleaning
- Double Cycle
- Quiet to OSHA
- For Motors and Generators
- Custom and OEM Designs

Junction Boxes

Quick Connects

Custom Engineered Products

Parts In Stock



TECHNOLOGY

Staff of Degreed Engineers:

- EE & ME

Engineering Design

- Complete New Machines
- Upgraded HP Voltage Enclosure
- Specification
- Certification
- Troubleshooting
- Vibration Analysis
- Thermal Analysis
- Training
- Maintenance
- Disaster Relief Planning
- 3rd Party / Failure Analysis

CAD/CAM

- 3D Design
- FEA - Finite Element Analysis
- AutoCAD to CNC Machine

Customer Inventory Storage

- Emergency Spares
- Climate Controlled
- Maintained
- Periodic Proof Testing
- Complete Machines
- Specialty Parts
- On-site 300,000 Square Feet
- 24 / 7 Access

Vendor Managed Inventory

Manuals

Testing

Consultation

Safety

GEQ OVERVIEW 3

TEST LAB

AC and DC Equipment:

- Motors
- Generators
- Drives
- Transformers
- Drive Lines (String Testing)

Static and No Load

- AC to 30,000HP/25,000kw
- DC to 20,000HP/15,000kw

Full Load Testing

- AC to 6000 HP
- DC to 6500 HP

Dynamometer Load

- to 25,000 ft./lbs.
- to 5,000 RPM

Orientation

- Horizontal
- Vertical

Computer Recording

- Voltages
- Currents
- HP/KW
- Efficiency
- Speed
- Vibration
- Spectrum
- RTDs
- Thermal Imaging

Sinusoidal and VFD

Witness

- Worldwide Remote Via Internet
- Client
- 3rd Party Certification

Static Testing

- Surge
- High Potential
- Polarization Index
- DLRO
- Bar to Bar
- Dimensional

Regulatory | Certification

IN HOUSE EQUIPMENT

CNC Machining

- Shafts
- Endbells
- Seals
- Parts

CNC Milling

- Endells
- Rotor Bars
- Frames

CNC Cutting

- Laser
- Plasma

CNC Balancing

- Hard Bearing to 10,000 lbs.
- Soft Bearing to 50,000 lbs.

CNC Cleaning

- Cleaning Machine
- Burn Out Oven

CNC Turn & Undercut DC Arm

CNC Electrical Testing

- Core Loss
- Resistance, Inductance
- High Potential/Surge Testing

CNC Test Lab (see test)

Manual Machining

- 10 Lathes (s, m, l)
- 3 Vertical mills (m, l)
- 3 Horizontal mills (m, l)

2 Baking Ovens

Water Stripping of Windings

Vacuum Pressure Impregnation

Metal Fabrication

- Heavy Steel
- Sheet Metal
- Rolling
- Tig, Mig & Stick Welding
- Custom Junction Boxes
- Custom Components

REPAIR AND REMANUFACTURING

Cleaning

Baking

Mechanical Inspection

Electrical Inspection

Failure Analysis

Mechanical Repair

Replacement

- Shafts - CNC Alloy
- Bearings
- Rotors
- Stators

Balancing

Winding

- Form Coils
- Random Coils
- Medium Voltage
- AC Rotor Barring
- AC Wound Rotor
- AC Generator Rotor
- DC Rotor
- DC Fields
- Coil Supply
- Exciter Rotors
- Exciter Stators

Encapsulation:

- VPI Class H
- Dip Class H

Enclosures

- Repair/Replace
- Fans
- Covers
- Junction Boxes

Testing (see Test Lab)

CERTIFICATION

GULF ELECTROQUIP IS ISO 9001:2015 CERTIFIED.



We are also factory authorized by GE and Reliance, the only shop that is in the USA. These manufacturer's appreciate and depend on our drilling and electric motor engineering experience.



Gulf Electroquip is also recognized for testing by the following standards organizations.



QUALITY ASSURANCE



Corporate Quality Policy Statement

At Red Claw LLC & Gulf Electroquip LTD,

DRILLING MOTORS	we are committed to continuously
GENERATORS	improving our products & processes to
BLOWERS	provide the highest quality, maximum value
PARTS	and outstanding service to our customers.

Declaración de política de calidad corporativa

En Red Claw LLC y Gulf Electroquip LTD,

MOTORES DE LA PERFORACION	estamos comprometidos con la mejora
GENERADORES	continua de nuestros productos y procesos
SOPLADORES	para proporcionar la más alta calidad, valor
PIEZAS	máximo y un servicio excepcional a nuestros
	clientes.



PRODUCTS

DRILLMAX400 Top Drive Motor

DRILLMAX600 Top Drive Motor

DRILLMAX2000 Drilling Motor

QUIET CLEAN Motor Blower

whisperclean Motor Blower

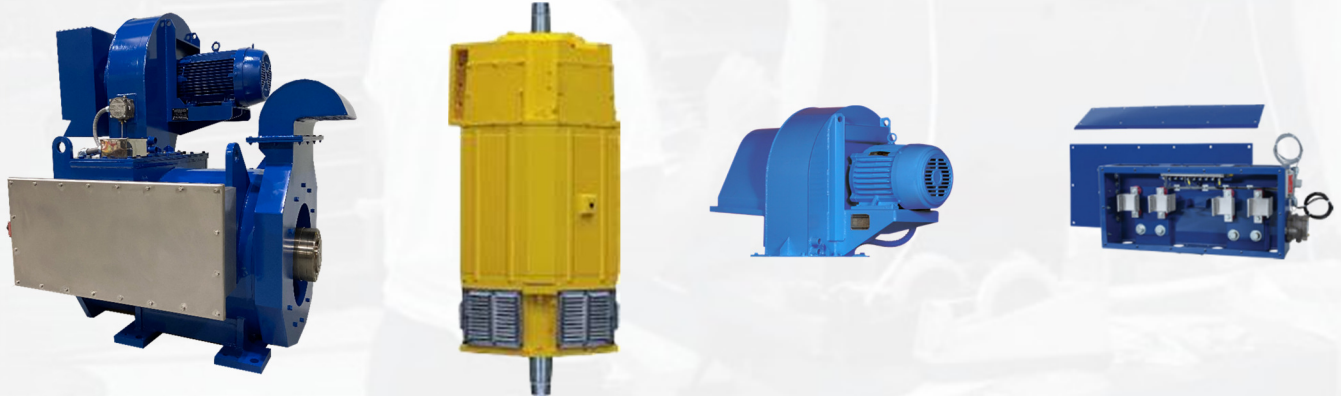
Junction Boxes

QUICKCONNECT1000

Safety Products

Parts

Emergency Motor Inventory



DRILLMAX400 MOTOR



A TOP DRIVE MOTOR WITH THE HEART OF A LARGER SEVERE SERVICE DRILLING MOTOR. NOW YOU CAN GET A BETTER MOTOR AT A FRACTION OF THE COST OF YET ANOTHER TOP DRIVE MOTOR FAILURE



Unit shown is a representation of the general motor construction. Actual unit may differ from the unit shown above.



TOP DRIVE MOTOR FAILURES CAN COST OVER \$100,000 AND DAYS OF DOWNTIME

Engineered and manufactured for performance, productivity and durability. Ideal for oil and gas rig top drives.

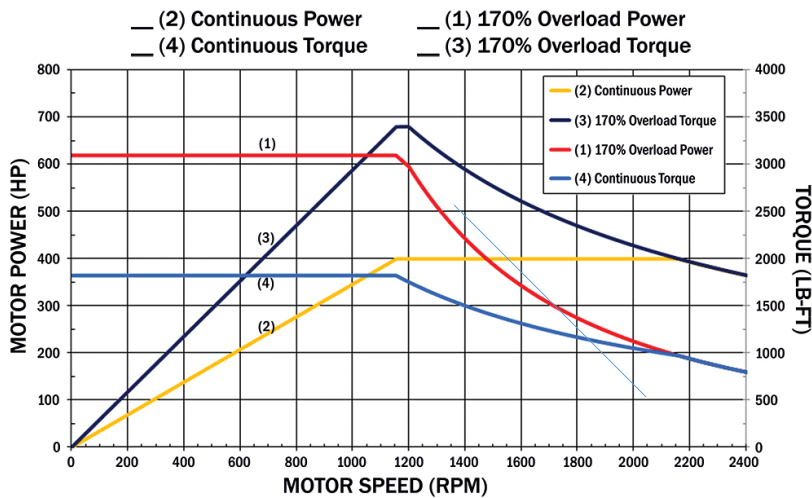
FEATURES

- New higher strength bearings and seals – double the systems
- Upgraded power circuit
- Cast aluminum rotor
- Safer and faster connection
 - Eliminating terminal block
 - Copper buss tabs – ‘Bolt, Tape and Go’
- Patented **QUIETCLEAN** blower (optional)
- Form wound Kapton windings
- Interchangeable with existing motors



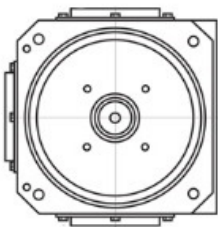
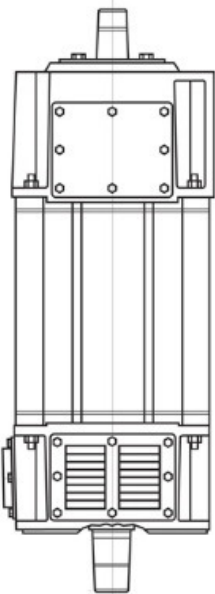
DRILLMAX400 AC MOTOR

DRILLMAX400 MOTOR PERFORMANCE CURVES



DRILLMAX400 MOTOR SPECIFICATIONS

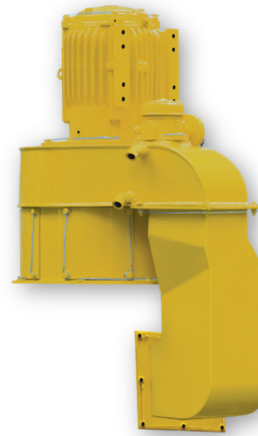
SIDE VIEW



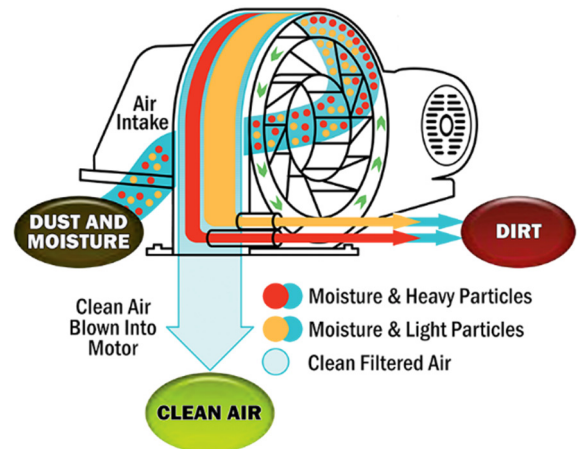
DRIVE END

- Horsepower: 298 KW (400 HP)
- Rated Voltage: 575 V
- Rated Frequency: 39.5 Hz
- Base Speed: 1155 RPM
- Max Speed: 3750 RPM
- Duty: (IEC): S1, Continuous
- Current at Rated Load: 368 AMPS
- Efficiency: 96%
- Number of Poles: 4
- Full Load Torque: 1818 FT|LBS
- Intermittent Duty Torque: 3250 FT|LBS
- Intermittent Duty Cycle: (IEC) S9, 1155 RPM at 480 HP for 120 seconds; 80 RPM at no load for 90 seconds
- Ambient Conditions: -20°C to +50°C at 400 HP with 1100 SCFM cooling air
- Max. Altitude: 1 Km (3300 FT)
- Bearings Upper Bearing: Thrust Ball Bearing, Lower Bearing: Roller Bearing
- Cooling: Separate Force Ventilation 1100 SCFM at 40°C
- Weight: Approximately 2500 LBS
- Connections: Buss Tab, Terminal Board, Flying Lead
- Enclosure: IP44
- Color: Safety Yellow

DRILLMAX400 OPTIONS



PATENTED AIR CLEANING MOTOR BLOWER filters 90%+ of the dirt, dust, and moisture out of the air before the air flows into the motor. This highly efficient blower lowers contamination inside the drilling motor, yielding greater reliability, longer time between rebuilds and less downtime for the rig.



NO PAPER OR CLOTH ELEMENT FILTRATION
ALL MECHANICAL, 2 STAGE CLEANING TECHNOLOGY

QUIETCLEAN®

MORE DRILLMAX400 OPTIONS

- Thermal Block
- RTDs
- Brake Hub
- Junction Box
- Pinion
- Cable Connections Splice Kit
- Special Options



Purchase your GEQ DRILLMAX400 from the GEQ factory and receive a full factory warranty, GEQ Factory Service, and quality GEQ Factory Parts. Gulf Electroquip has equipment in stock – ready to order and install.

©2020 GEQ DRILLMAX400 is a registered trademark of Gulf Electroquip, LTD.. DISCLAIMER: Product specifications and availability are subject to change without notice. Statements contained herein are not intended to create any warranty - expressed or implied. Product trade names, marks or logos are the property of their respective owners. All photography and illustrations are copyrighted by Gulf Electroquip, 2020.

DRILLMAX600 MOTOR



A TOP DRIVE MOTOR WITH THE HEART OF A LARGER SEVERE SERVICE DRILLING MOTOR. NOW YOU CAN GET A BETTER MOTOR AT A FRACTION OF THE COST OF YET ANOTHER TOP DRIVE MOTOR FAILURE



Unit shown is a representation of the general motor construction. Actual unit may differ from the unit shown above.

TOP DRIVE MOTOR FAILURES CAN COST OVER \$100,000 AND DAYS OF DOWNTIME

Engineered and manufactured for performance, productivity and durability. Ideal for oil and gas rig top drives.

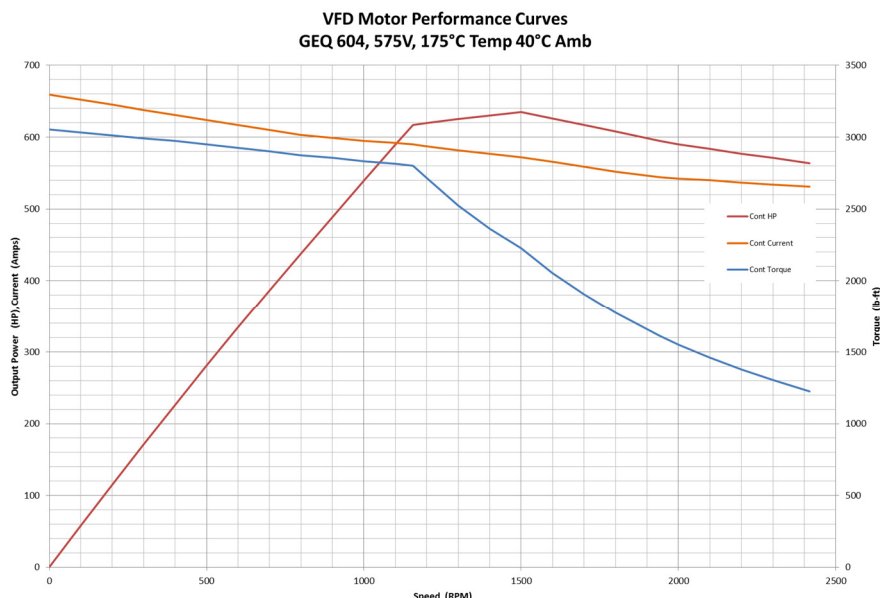
FEATURES

- True & certified 600 HP continuous
 - **DRILLMAX600**
 - **DRILLMAX600 XL** - high performance, certified arrangement
- New higher strength bearings and seals
- Double the bearings system
- Safer and faster connection
- Eliminating terminal block
- Copper buss tabs – ‘Bolt, Tape and Go’
- Patented Double Clean Blower (optional)
- Form wound Kapton windings
- Interchangeable with existing motors



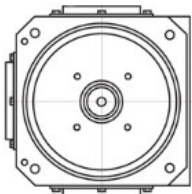
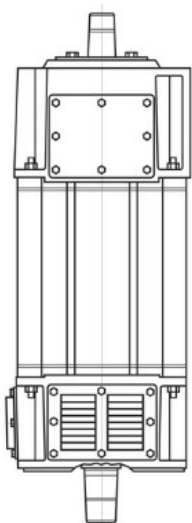
DRILLMAX600 AC MOTOR

DRILLMAX600 MOTOR PERFORMANCE CURVES



DRILLMAX600 MOTOR SPECIFICATIONS

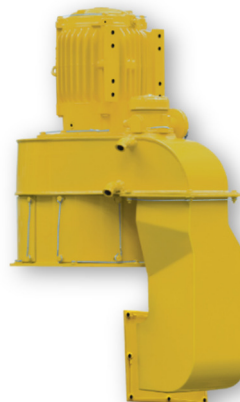
SIDE VIEW



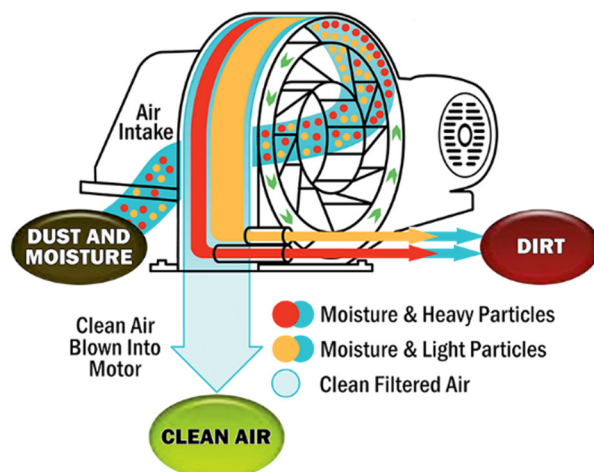
DRIVE END

- Horsepower: 600
- Rated Voltage: 575 V
- Rated Frequency: 39.4 Hz
- Base Speed: 1156 RPM
- Max Speed: 2417 RPM
- Duty: (IEC) S1, Continuous
- Maximum Current at Full Load: 590 Amps (Not to Exceed)
- Efficiency: 93.9%
- Number of Poles: 4
- Full Load Torque: 2726 ft. - lbs. (3696 Nm)
- Ambient Conditions: -40°C to +55°C with SCFM Cooling Air
- Maximum Altitude: 1 Km (3300 ft.)
- Upper Bearing: Four Point Contact Ball Bearing
- Lower Bearing: Cylindrical Roller Bearing
- Cooling: Separate Force Ventilation: - SCFM at 40°C
- Enclosure: IP44

DRILLMAX600 SERIES OPTIONS



PATENTED AIR CLEANING MOTOR BLOWER filters 90%+ of the dirt, dust, and moisture out of the air before the air flows into the motor. This highly efficient blower lowers contamination inside the drilling motor, yielding greater reliability, longer time between rebuilds and less downtime for the rig.



NO PAPER OR CLOTH ELEMENT FILTRATION
ALL MECHANICAL, 2 STAGE CLEANING TECHNOLOGY

QUIETCLEAN®

MORE DRILLMAX600 SERIES OPTIONS

- Thermal Block
- RTDs
- Brake Hub
- Junction Box
- Pinion
- Cable Connections Splice Kit
- Special Options



Purchase your GEQ DRILLMAX600 from the GEQ factory and receive a full factory warranty, GEQ Factory Service, and quality GEQ Factory Parts. Gulf Electroquip has equipment in stock – ready to order and install.

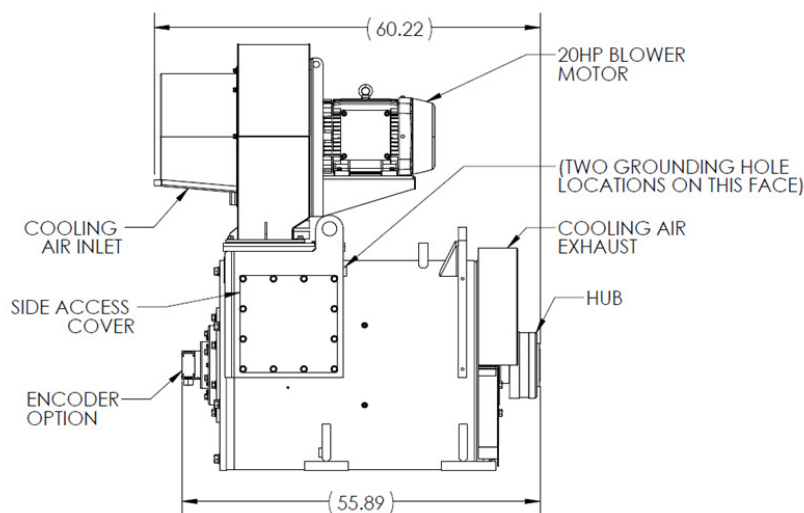
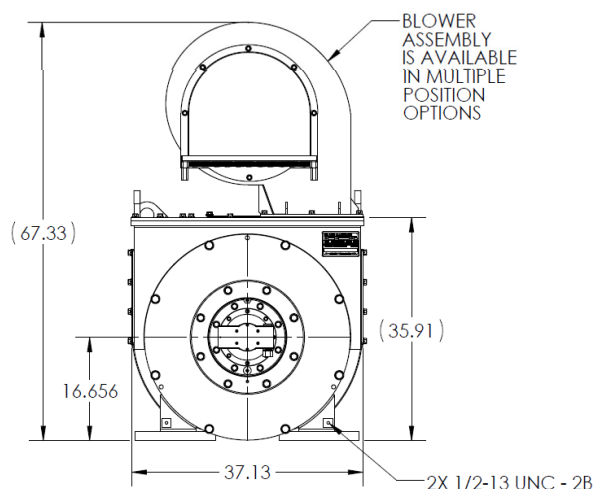
DRILLMAX1600 MOTOR

OVER
65
YEARS

1600 HP AC DRILLING MOTOR

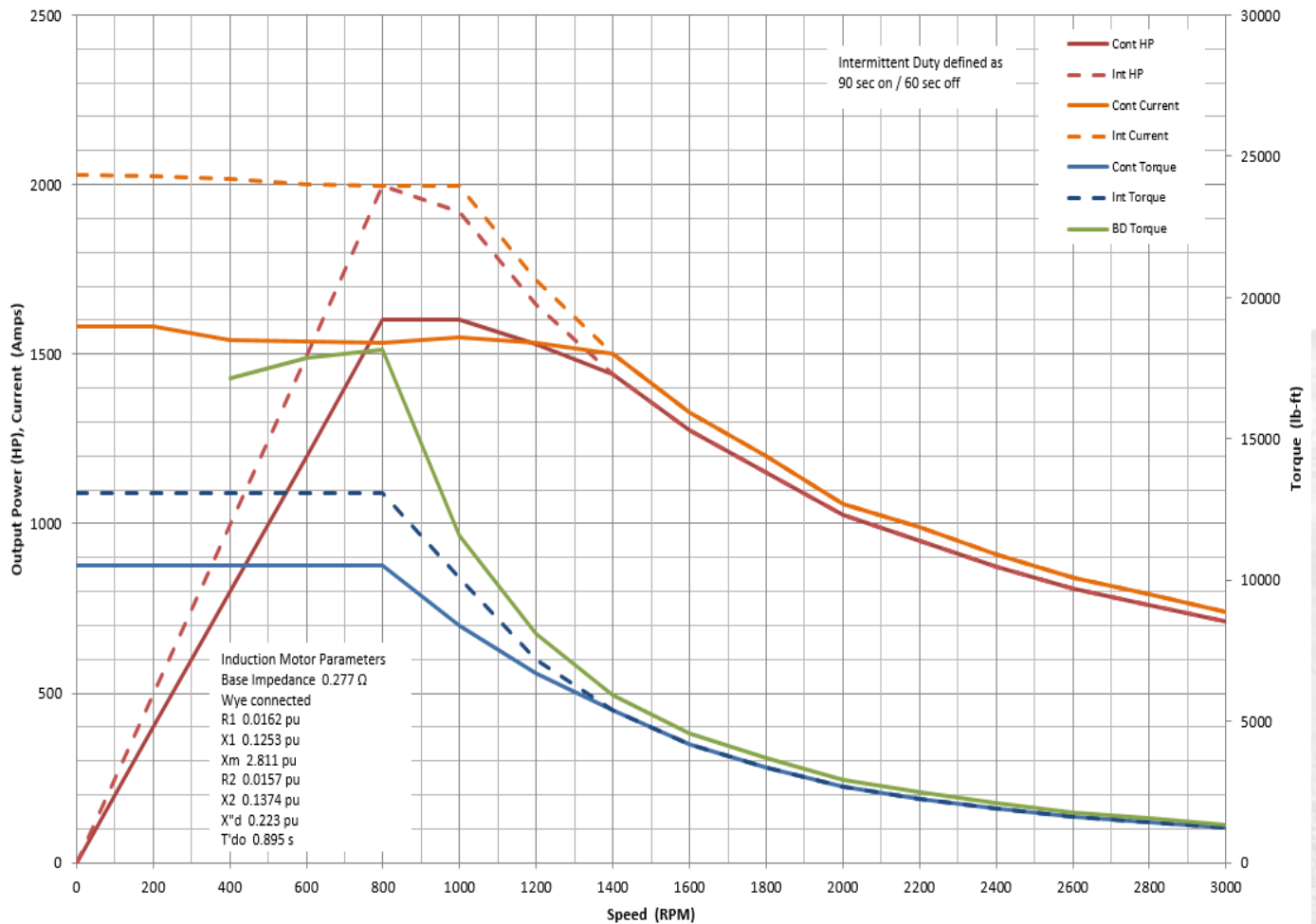
SPECIFICATIONS AND CHARACTERISTICS

- Continuous Rating:
 - 1600 HP @ 40 C Ambient
 - 1534 AAC
 - Torque: 10,597 lb-ft
- Intermittent Rating:
 - 1600 HP @ 1534 AAC
 - Torque: 10,597 lb-ft
- Volts: 575 VAC
- Base Speed: 793 RPM @ 40.5 Hz
- Speed Range: 0 to 3000 RPM
- Winding:
 - Form Coil,
 - Kapton-Mica Insulation System
 - Class H
 - 13,800Volt VPI Encapsulation
 - 6 Pole
- Shafting:
 - Material: 4340
 - Single and Double Shaft
 - Shaft standard drilling taper: 1.25 in/ft
- Options/Accessories:
 - Hub: Multiple Oilfield Hubs Available
 - Space Heaters: 120/240V
 - Temp Detection Winding and Bearing
 - Tachometer Shaft: Multiple Available
 - Tachometer / Encoder
 - Auxiliary Terminal Block
 - Junction Box:
 - Side Mount
 - Fast Field Change Design
 - Buss Bar Connections
 - Carbon or Stainless Steel
 - Pressure sensor
 - Lock Out Device
- Classified Area Certification:
 - None
 - Available at customer request
- Paint: Per Customer Requirement
- Testing:
 - FAT Testing: Standard at No Load
 - Full Load Dyno testing option
- Ventilation Blower:
 - Patented Quiet Clean Design
 - 20HP, 2 Pole UL Listed Motor



DRILLMAX1600 AC MOTOR

Motor Performance Curves
GEQ 1600 HP, 800 rpm, 575V, 40°C Amb.



24 HOUR HOTLINE: 713.675.2525

Purchase your GEQ DRILLMAX AC drilling motors from the GEQ factory and receive a full factory warranty, GEQ Factory Service, and quality GEQ Factory Parts. Gulf Electroquip has equipment in stock – ready to order and install.



425 North Wayside Drive, Houston, TX 77020 USA
gulfelectroquip.com | sales@gulfelectroquip.com | 713.675.2525

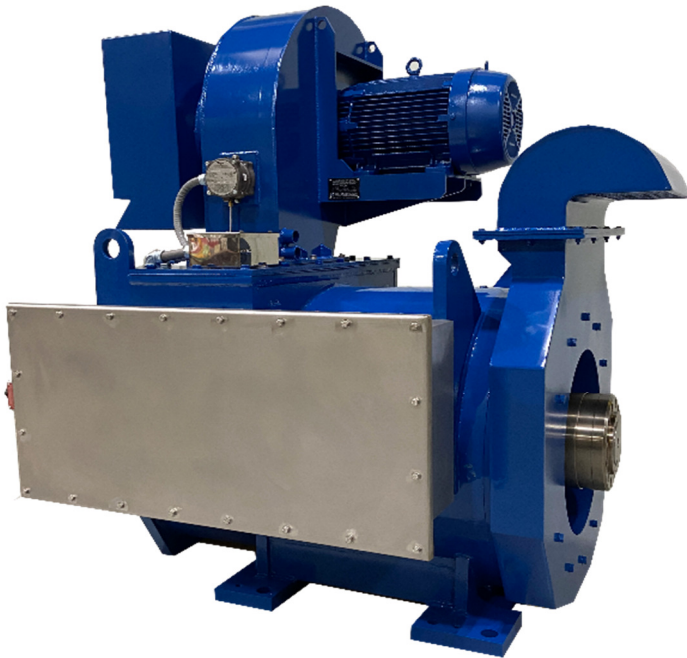


DISCLAIMER: Product specifications and availability are subject to change without notice. Statements in this website or digital publication PDFs are not intended to create any warranty - expressed or implied. Product trade names, marks or logos are the property of their respective owners. All photography and illustrations are copyrighted by Gulf Electroquip, 2023.

DRILLMAX2000 MOTOR



AN AC DRILLING MOTOR DESIGNED AND BUILT TO WITHSTAND CONTINUOUS SEVERE SERVICE IN EXTREME ENVIRONMENTS.



Shown with optional Whisperclean Motor Blower.

MAXIMIZE PRODUCTIVITY AND AVOID UNECESSARY DOWNTIME WITH ONE OF THESE DURABLE DRILLING MOTORS

Engineered and manufactured for performance, productivity and durability. Ideal for oil and gas rig **drawworks**.

SPECIAL FEATURES

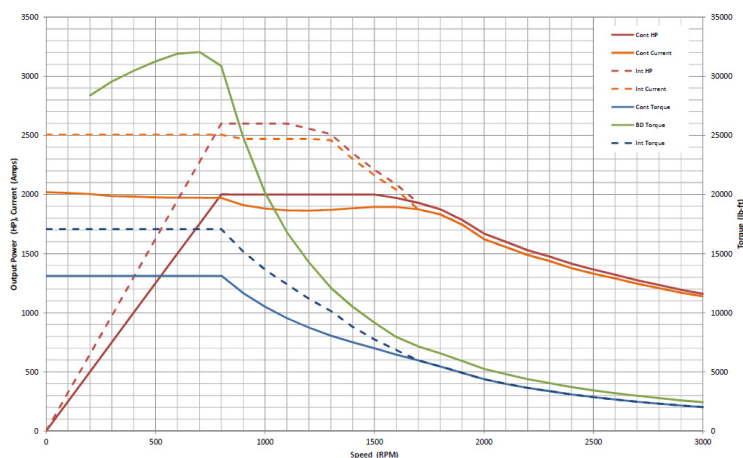
- Drawworks - increased torque for faster tripping speeds at top speed
- Anti-cogging design for smooth creep speed operation
- Junction box with universal access
- Mounting dimensions
- 1750 – 2000 HP: Increased stability of additional 2 rear feet
- Optional Whisperclean Motor Blower with double cleaning technology
- Custom designs supplied for your needs



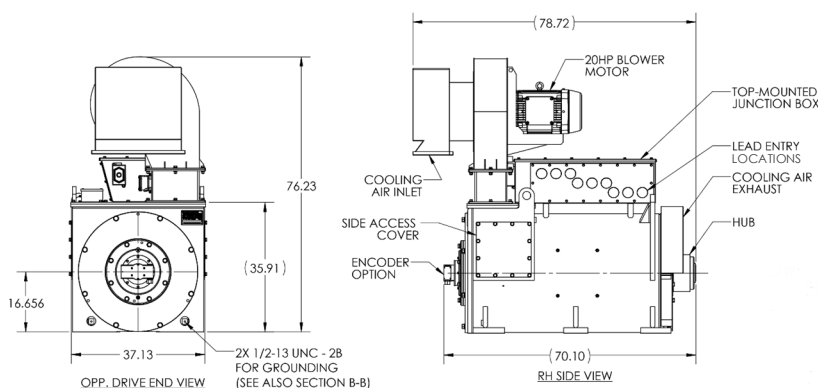
DRILLMAX2000 AC MOTOR

DRILLMAX2000 MOTOR PERFORMANCE CURVE

GEQ DRILLMAX2000 HP Motor Performance Curves
@575VAC - GEQ 2000 HP, 800 rpm, 55°C Ambient, 175°C Max



DRILLMAX2000 MOTOR GA DIAGRAM



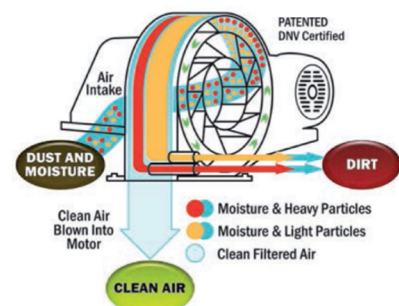
DRILLMAX2000 STANDARD FEATURES

- VFD ready design
- Intermittent to higher capacity
- Max speed 3000 RPM (on DW config)
- Insulated non-drive end bearing
- Form wound Class H Kapton-Mica VPI windings
- Rotor windings are copper bar alloy
- Grease lubricated anti-friction bearings
- Stator RTD's – (6) 100 Ohm Plat.
- Shaft material high tensile strength in 4140 or 4340 steel
- ISO precision balance
- Space heaters
- Junction box

DRILLMAX2000 OPTIONAL FEATURES

- Exhaust configuration options
- IP 44 motor enclosure
- IP 56 junction box enclosure
- Encoder
- Air pressure switch
- Double shaft extension
- Full HP Dyno Testing
- Custom design changes to ANY part to fit your needs

OPTIONAL WHISPERCLEAN MOTOR BLOWERS



NO PAPER OR CLOTH ELEMENT FILTRATION
ALL MECHANICAL, 2-STAGE CLEANING TECHNOLOGY



Purchase your GEQ DRILLMAX2000 from the GEQ factory and receive a full factory warranty, GEQ Factory Service, and quality GEQ Factory Parts. Gulf Electroquip has equipment in stock – ready to order and install.



DRILLMAX2000

QUIET CLEAN™ MOTOR BLOWER

CENTRIFUGALLY CLEANING DRILLING MOTOR COOLING BLOWER ASSEMBLY.
EXHAUST FLANGE MOUNTS TO A 400 HP TOP DRIVE MOTOR.
BLOWER ASSEMBLY IS SAFETY YELLOW PAINTED CARBON STEEL.

Double Clean™ BLOWERS

mechanically filter out sand, dirt, moisture and other abrasive contaminants for longer motor life. Utilizing the Double Clean™ cleaning technology these blowers lower the contamination inside the drilling motor, yielding greater reliability and longer time between rebuilds, which reduces downtime for the rig. Using a patented “element-less” filtration method, Double Clean blowers clean the air while providing the required cooling air for the drilling motor. This requires less maintenance than element filtration models, and no additional maintenance than a standard non-filtered blower.



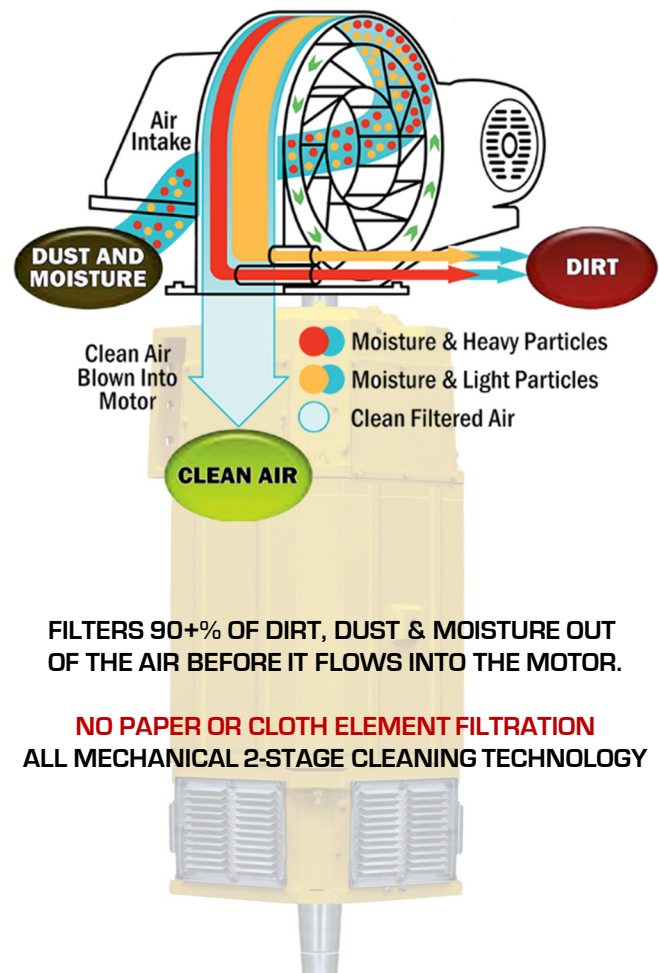
*Unit shown is a representation of the general blower construction.
Actual unit may differ from the unit shown above.*

ADVANTAGES

- Increased motor life
- Increased time between rebuilds
- Decreased moisture penetration
- Decreased contamination attacking insulation and windings
- Less moisture in the motor produces:
 - Higher Megger readings
 - Decreased risk of flash over
 - 90% less contamination
- Less fuse change-outs
- Yields longer VFD/SCR lifetime
- Longer life between rebuilds
- Longer insulation life for motor

SPECIFICATIONS AND CHARACTERISTICS

- Size: 5 HP
- Filtration Method: Patented Double Clean™
- Filtration Efficiency: 90+% on sand
- Construction: carbon steel
- Speed: 3600 RPM
- Motor: TENV 5 HP 575 V
- Enclosure: TEFC/XP Cast Iron Construction
- Service Factor: 1.15



**FILTERS 90+% OF DIRT, DUST & MOISTURE OUT
OF THE AIR BEFORE IT FLOWS INTO THE MOTOR.**

**NO PAPER OR CLOTH ELEMENT FILTRATION
ALL MECHANICAL 2-STAGE CLEANING TECHNOLOGY**

QUIET CLEAN™ MOTOR BLOWER

CLEANER RUNS BETTER. REDUCE RIG DOWNTIME BY EXTENDING THE LIFE OF YOUR DRILLING MOTOR BY KEEPING IT CLEAN.

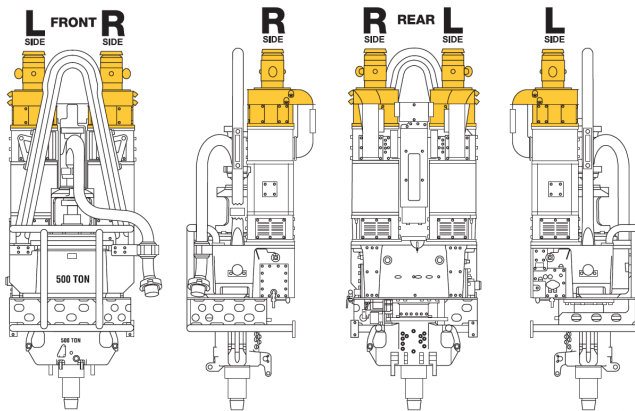


A typical 400 HP motor coming in from the field.

ELECTRICITY & WATER DON'T MIX

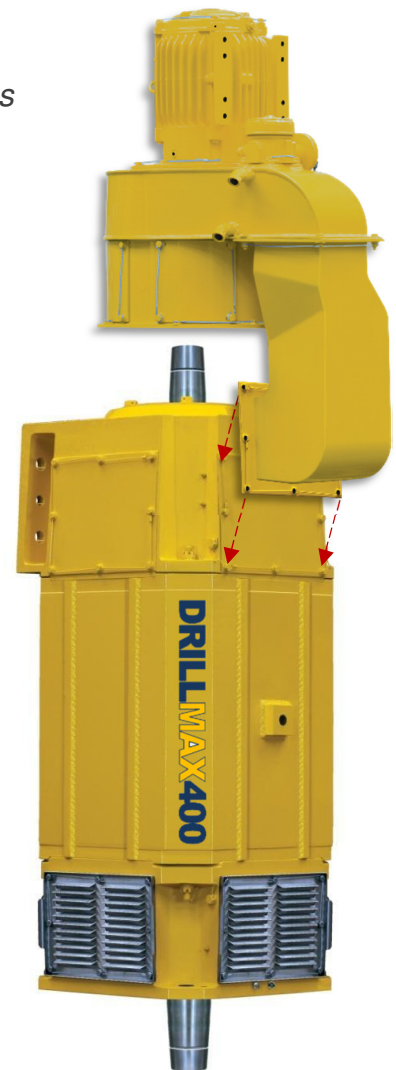
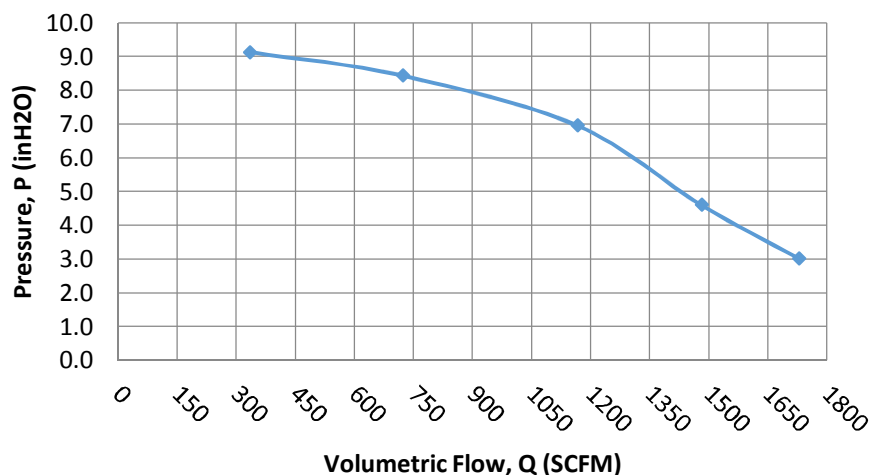
Rain, dirt, etc., being forced through the motor from the blower eats the insulation and contributes to overheating. This results in a dramatic increase in downtime.

After 10 years of proven decreased downtime savings, one of our major customers - with approximately 500 rigs - just completed a program to replace EVERY drilling motor blower with our cleaning blowers. The rigs working versus motors repaired have dropped dramatically.



Versatile mounting options on the Top Drive motor.

5 HP TDS-11 LHTM Blower Performance Data



Utilizing PATENTED Double Clean™ Self-Clean Drilling Motor Blowers - US Patent No. 6,648,935



425 North Wayside Drive, Houston, TX 77020 USA gulfelectroquip.com | sales@gulfelectroquip.com | 713.675.2525

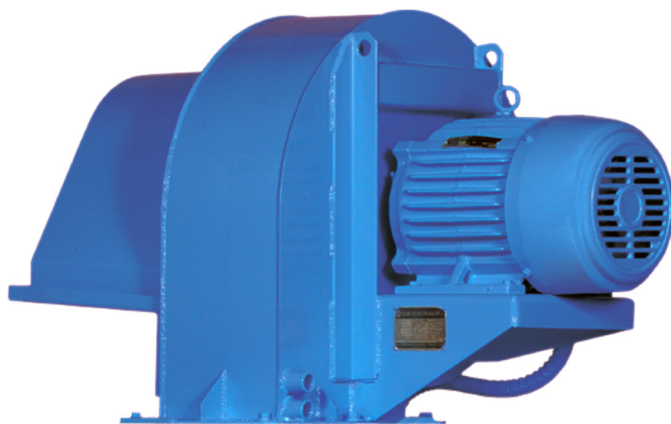
DISCLAIMER: Product specifications and availability are subject to change without notice. Statements in this website or digital publication PDFs are not intended to create any warranty - expressed or implied. Product trade names, marks or logos are the property of their respective owners. All photography and illustrations are copyrighted by Gulf Electroquip, 2020. Double CLEAN™ is a trademark of Gulf Electroquip.

262282 QUIET CLEAN BLOWER

MIRROR 20HP CENTRIFUGALLY CLEANING DRILLING MOTOR COOLING BLOWER ASSEMBLY WITH STANDARD INTAKE. EXHAUST FLANGE MOUNTS TO A SIEMENS TEFC 20HP 460 VAC 60 HZ 3600 RPM. BLOWER ASSEMBLY IS CARBON STEEL PAINTED BLUE

Quiet Clean™ Blowers

mechanically filter out sand, dirt, moisture and other abrasive contaminants for longer motor life. Utilizing the Quiet Clean™ cleaning technology these blowers lower the contamination inside the drilling motor, yielding greater reliability and longer time between rebuilds, which reduces downtime for the rig. Using a patented “element-less” filtration method, Quiet Clean blowers clean the air while providing the required cooling air for the drilling motor. This requires less maintenance than element filtration models, and no additional maintenance than a standard non-filtered blower.



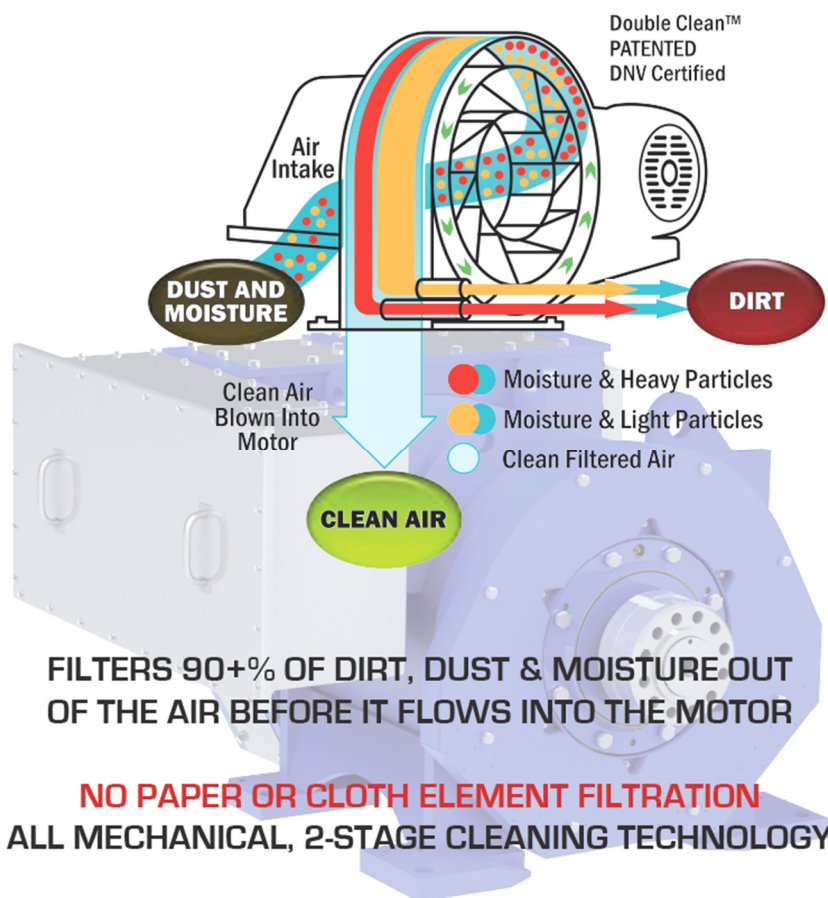
Unit shown is a representation of the general blower construction. Actual unit may differ from the unit shown above.

ADVANTAGES

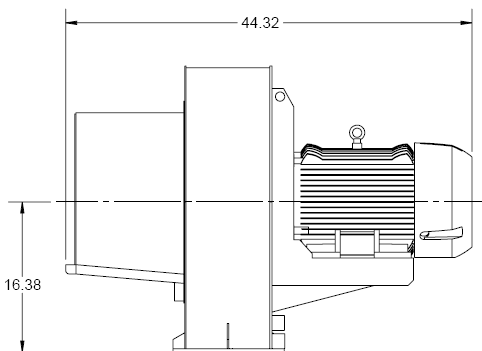
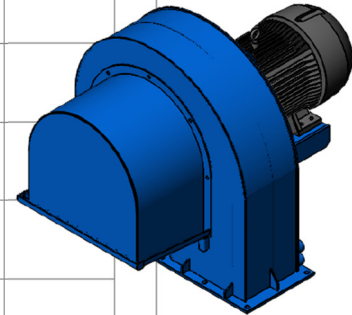
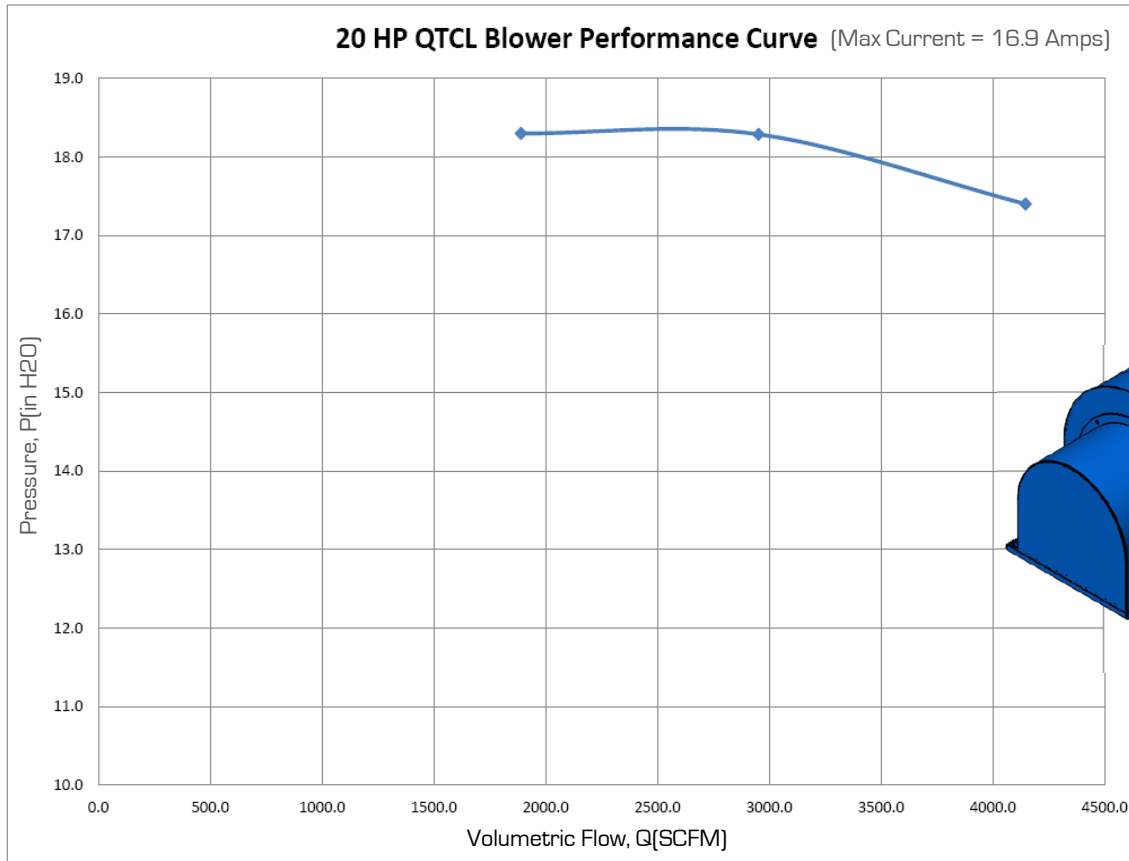
- Increased motor life
- Increased time between rebuilds
- Decreased moisture penetration
- Decreased contamination attacking insulation and windings
- Decreased commutator wear
- Less moisture in the motor produces:
 - Higher Megger readings
 - Decreased risk of flash over
 - 90% less contamination
- Less fuse change-outs
- Yields longer VFD/SCR lifetime
- Longer life between rebuilds
- Longer insulation life for motor

SPECIFICATIONS AND CHARACTERISTICS

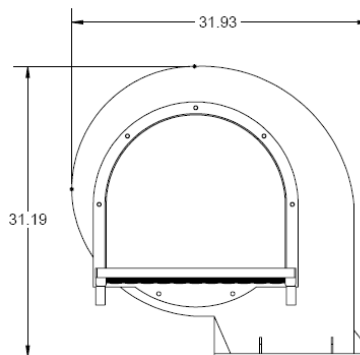
- Size: 20 HP
- Filtration Method: Patented Quiet Clean™
- Filtration Efficiency: 90+% on sand
- Construction: carbon steel
- Remote Mount version available
- Speed: 3600 RPM
- Motor: SIEMENS TEFC 20 HP 460 Vac 60 Hz
- Enclosure: TEFC/XP Cast Iron Construction
- Service Factor: 1.15



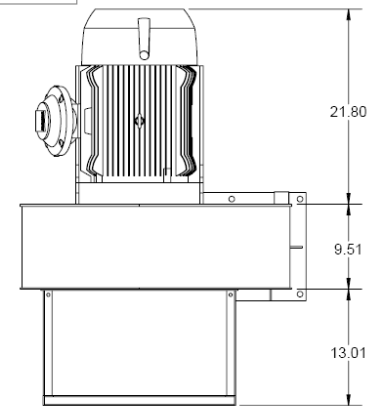
262282 QUIET CLEAN BLOWER



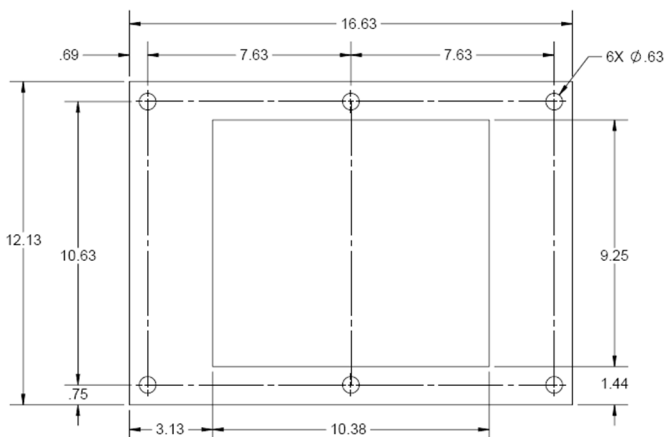
SIDE VIEW



FRONT VIEW



TOP VIEW



**FLANGE DETAIL
SCALE 1 : 4**

Utilizing **PATENTED Double Clean™ Self-Clean Drilling Motor Blowers** - US Patent No. 6,648,935



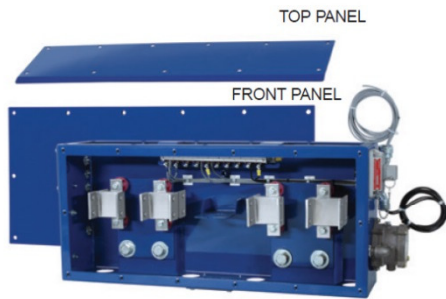
425 North Wayside Drive, Houston, TX 77020 USA
gulfelectroquip.com | sales@gulfelectroquip.com |
 713.675.2525

DISCLAIMER: Product specifications and availability are subject to change without notice. Statements in this website or digital publication PDFs are not intended to create any warranty - expressed or implied. Product trade names, marks or logos are the property of their respective owners. All photography and illustrations are copyrighted by Gulf Electroquip, 2020.

GEQ MOTOR JUNCTION BOXES

FOR VERTICAL & HORIZONTAL TRACTION MOTORS & ROTARY TABLE MOTORS FOR GE752, EMD, NOV & WARD LEONARD MOTORS

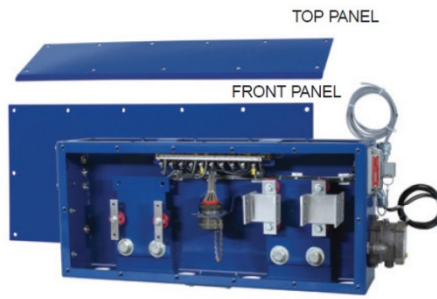
J-BOX for GE752 TRACTION MOTOR
SERIES CONFIGURED - EQUIPPED **PN 256013**



FULLY-EQUIPPED JUNCTION BOX
for SERIES CONFIGURATION

Junction Box fully-equipped for GE752 series motor; bolt-on connections; "XP" lock out; "XP" pressure switch; painted color: national blue; mild steel construction. NOTE: Stainless steel construction available for extra cost.

J-BOX for GE752 TRACTION MOTOR
SHUNT CONFIGURED - EQUIPPED **PN 256015**



FULLY-EQUIPPED JUNCTION BOX
for SHUNT CONFIGURATION

Junction Box fully-equipped for GE752 shunt motor; bolt-on connections; "XP" lock out; "XP" pressure switch; painted color: national blue; mild steel construction. NOTE: Stainless steel construction available for extra cost.

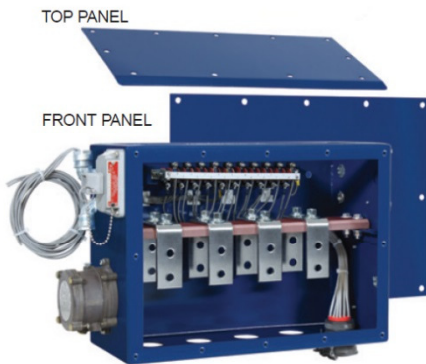
J-BOX for GE752 TRACTION MOTOR
SERIES or SHUNT CONFIG. - EMPTY **PN 256012**



EMPTY JUNCTION BOX
for SERIES or SHUNT CONFIGURATIONS

Junction Box empty for GE752 series or shunt motor; bolt-on connections capable; no internal parts; painted color: national blue; mild steel construction. NOTE: Stainless steel construction available for extra cost.

J-BOX for EMD-D79 TRACTION MOTOR
SERIES CONFIGURED - EQUIPPED **PN 256285**



FULLY-EQUIPPED JUNCTION BOX
for SERIES CONFIGURATION

Junction Box fully-equipped for EMD-D79 series motor; bolt-on connections capable; "XP" lock out; "XP" pressure switch; terminal board; painted color: national blue; mild steel construction. NOTE: Stainless steel construction available for extra cost.

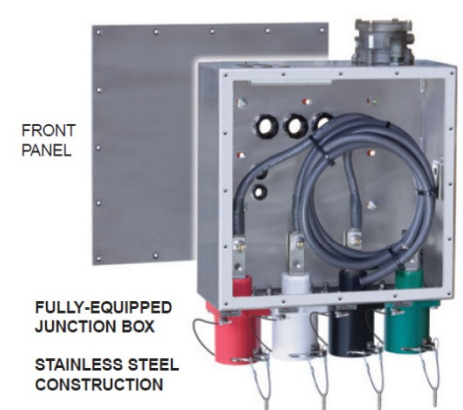
J-BOX for EMD-D79 TRACTION MOTOR
SERIES or SHUNT CONFIG. - EMPTY **PN 256541**



EMPTY JUNCTION BOX
for SERIES or SHUNT CONFIGURATIONS

Junction Box empty for EMD-D79 series motor; bolt-on connections capable; no internal parts; painted color: national blue; mild steel construction. NOTE: Stainless steel construction available for extra cost.

SS J-BOX for 400HP TDS11 ROTARY TABLE MOTOR
PRESSURE SWITCH / QUICK DISCONNECTS **PN 256551**



FULLY-EQUIPPED JUNCTION BOX
STAINLESS STEEL CONSTRUCTION

Stainless steel Junction Box equipped for 400HP TDS11 horizontal rotary table motor; bolt-on connections capable; "XP" pressure switch; four (4) external quick disconnects; stainless steel construction (painted for an extra cost). NOTE: Mild steel construction available for reduced cost.

DISCLAIMER: Product specifications and availability are subject to change without notice. Statements in this website or digital publication PDFs are not intended to create any warranty - expressed or implied. Product trade names, marks or logos are the property of their respective owners. All photography and illustrations are copyrighted by Gulf Electroquip, 2020. Double CLEAN™ is a trademark of Gulf Electroquip.

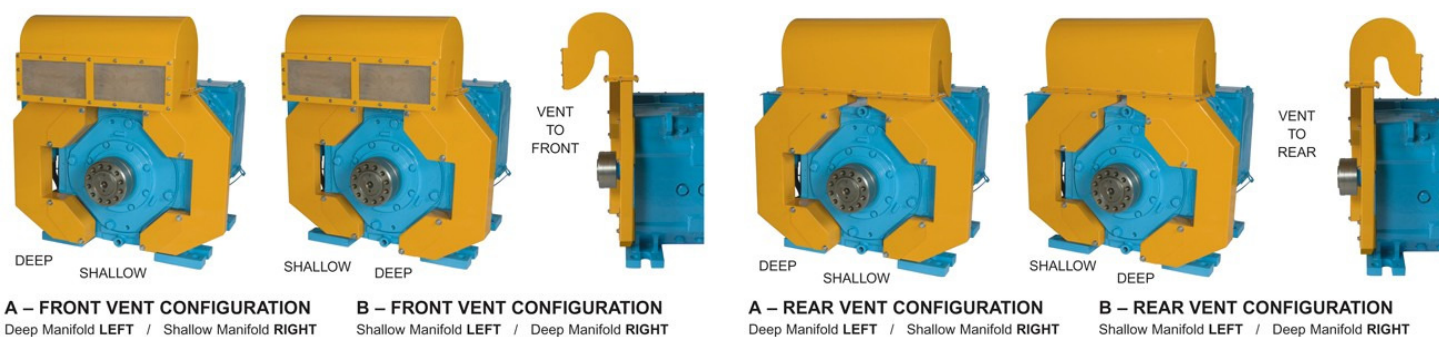
GEQ SPARK ARRESTOR

REVERSIBLE, BOLT-ON SYSTEM FOR DRILLING MOTORS IN HAZARDOUS ENVIRONMENTS



SPARK ARRESTOR FOR GE752 HIGH-TORQUE TRACTION MOTOR

Spark Arrestor for high torque GE752: Constructed of carbon steel. Colors: safety yellow or stainless steel. Set includes: Spark Arrestor Hood (PN257561) and two (2) 3" manifolds (PN257401). The set includes mounting hardware. Manifolds accommodate either direction of chain guard (or no chain guard at all). Chain guard bolts right over spark arrestor; manifolds have appropriate chain guard lugs aligned with motor frame. May be installed before or after motor is operational (motor must be off-line while installing). Customer responsible for providing lugs to mount chain guard. Installation time: 1 man / 1 hour. Use basic mechanic tools.



- PN 257518:** SAFETY YELLOW FOR GE752 HIGH-TORQUE TRACTION MOTOR WITH OR WITHOUT A CHAIN GUARD
- PN 257517:** STAINLESS STEEL FOR GE752 HIGH-TORQUE TRACTION MOTOR WITH OR WITHOUT A CHAIN GUARD
- PN 257516:** SAFETY YELLOW FOR GE752 HIGH-TORQUE TRACTION MOTOR WITH NO CHAIN GUARD
- PN 257515:** STAINLESS STEEL FOR GE752 HIGH-TORQUE TRACTION MOTOR WITH NO CHAIN GUARD
- PN 257520:** 'REVERSIBLE MANIFOLDS' FOR GE752 HIGH-TORQUE TRACTION MOTORS

DISCLAIMER: Product specifications and availability are subject to change without notice. Statements in this website or digital publication PDFs are not intended to create any warranty - expressed or implied. Product trade names, marks or logos are the property of their respective owners. All photography and illustrations are copyrighted by Gulf Electroquip, 2020. Double CLEAN™ is a trademark of Gulf Electroquip.

QUICK CONNECT 1000 SYSTEM

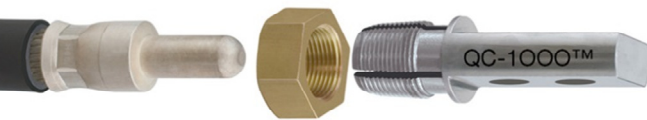
NOW ALL YOUR DRILLING OR MUD PUMP EQUIPMENT CAN BE DE-ELECTRIFIED IN MORE THAN HALF THE TIME AS STANDARD BOLT-ON CONNECTORS.

QC-1000™

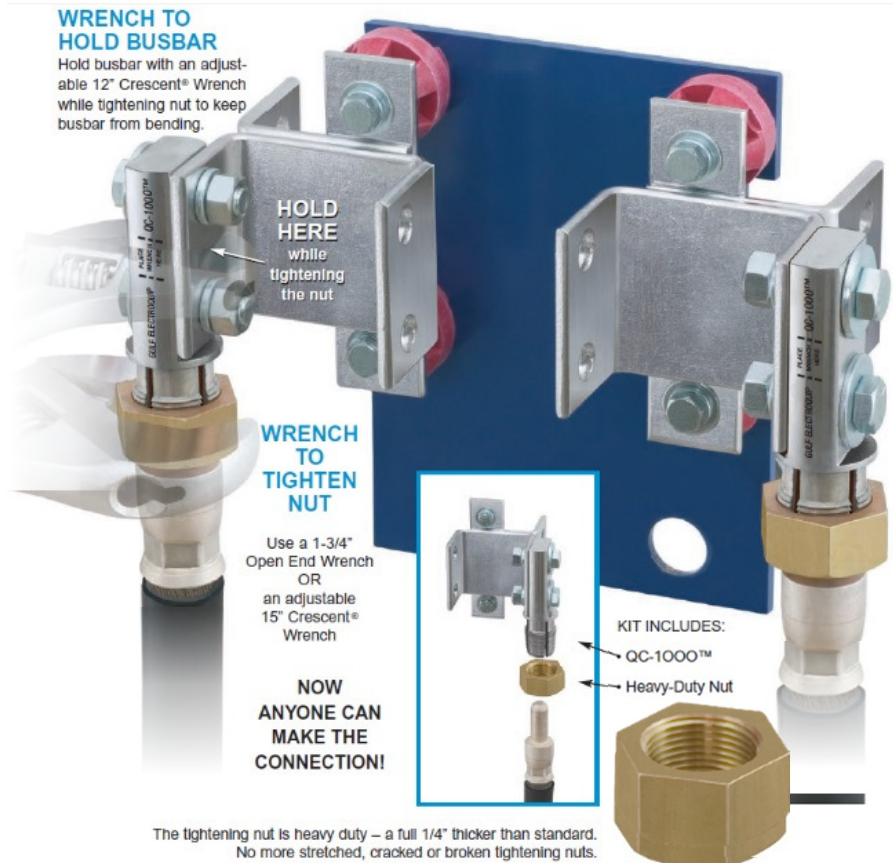
THE 10 MINUTE QUICK CONNECTION SYSTEM

- NEVER CHANGE your bolt-on junction box parts again to use Pyle Power Pin connectors!
- Add to your bolt-on terminals; ready to plug into your cables
- Fits ALL standard terminals on GE 752 motors
- For 535 MCM Cable on 1000 HP Traction Motors (any brand).
- Extra heavy duty, silver plated; a space for holding wrench when tightening.
- The tightening nut is heavy duty as well – a full 1/4" thicker.

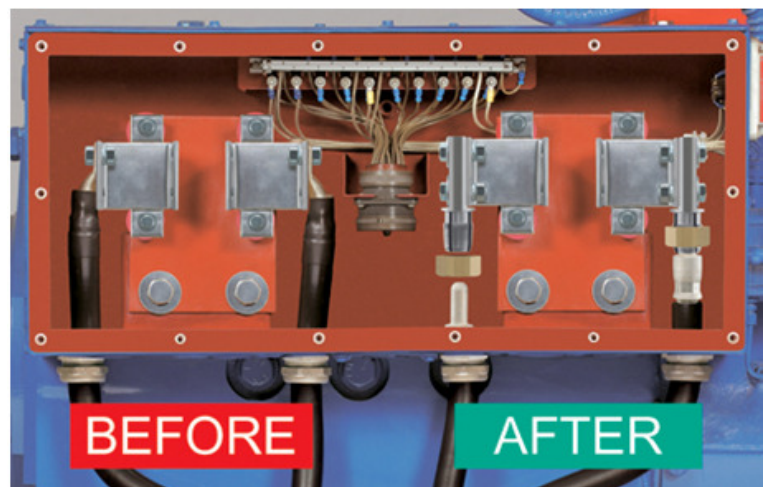
No more stretched, cracked or broken tightening nuts. The nut even fits on our competitors' receptacles. The tightening nut is heavy duty – a full 1/4" thicker than standard. No more stretched, cracked or broken tightening nuts.



DISCLAIMER: Product specifications and availability are subject to change without notice. Statements in this website or digital publication PDFs are not intended to create any warranty - expressed or implied. Product trade names, marks or logos are the property of their respective owners. All photography and illustrations are copyrighted by Gulf Electroquip, 2020. Double CLEAN™ is a trademark of Gulf Electroquip.

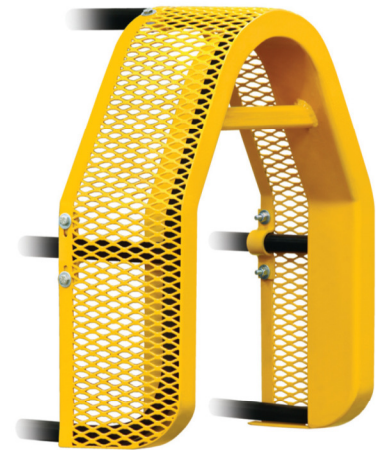


The tightening nut is heavy duty – a full 1/4" thicker than standard. No more stretched, cracked or broken tightening nuts.

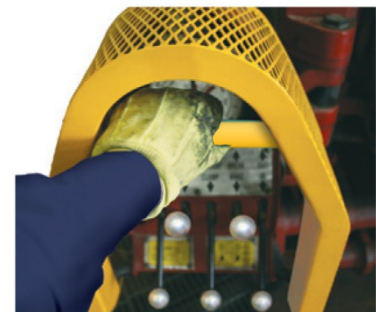


CUSTOM SAFETY GUARD

REDUCES HAND AND WRIST INJURIES FOR ST-80 IRON ROUGHNECK TUBULAR MAKEUP / BREAKOUT PN 400002



- Single-Piece Construction
- Mounting hardware included
- Mounts within 20 minutes
- Carbon Steel Construction
- Painted Safety Yellow



Ergonomic, single handle
offers optimum setting for
pull and push comfort

DISCLAIMER: Product specifications and availability are subject to change without notice. Statements in this website or digital publication PDFs are not intended to create any warranty - expressed or implied. Product trade names, marks or logos are the property of their respective owners. All photography and illustrations are copyrighted by Gulf Electroquip, 2020. Double CLEAN™ is a trademark of Gulf Electroquip.



SERVICES

Motor Repair & Remanufacturing

Generator Repair & Remanufacturing

Stator Upgrade

Technology

Testing

Machine Shop

Winding

Inspection & Assembly



MOTOR REPAIR & REMANUFACTURING

Gulf Electroquip is a GE factory-authorized repair facility and remanufactures AC and DC drilling motors. Brands include GE, EMD and WEG.

Gulf Electroquip is a GE factory-authorized repair facility and remanufactures GE752 Traction Motors and Top Drive Motors, GE761 Top Drive Drilling Motors, and GEB20-22 Traction Motors and Top Drive Motors.

BEFORE



AFTER



Gulf Electroquip remanufactures AC and DC top drive traction motors. Manufacturer brands include GE, GEQ, EMD and WEG.

The benefits of a remanufactured motor (vs. repaired motor) are:

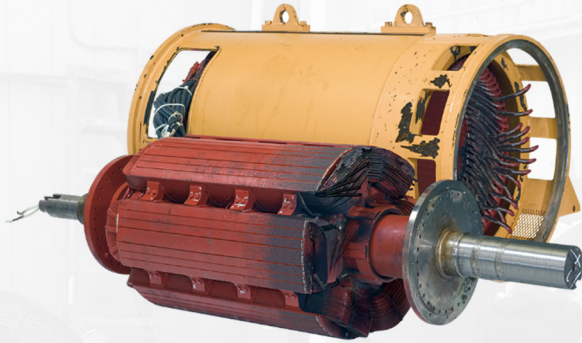
- Remanufactured to the same specifications of a brand new motor
- Same performance as a brand new motor
- Same durability and reliability as a brand new motor
- Same parts (and replacement parts) as a brand new motor
- Full-load tested and certified to meet specifications (available)
- Upgraded features better than the original brand new motor
- Lower price than a brand new motor
- Ability to extend original capital investment by remanufacturing the same motor frame multiple times



Contact the GEQ Sales Engineering Team to assist you in remanufacturing and outfitting your motor for optimum performance for your unique application.

GENERATOR REPAIR & REMANUFACTURING

Gulf Electroquip remanufactures AC and DC generators. Brands include GE, Kato, WEG, Baylor, Toshiba, CAT, ABB, Reliance, and Siemens.



BEFORE



AFTER

The benefits of a remanufactured generator (vs. repaired generator) are:

- Remanufactured to the same specifications of a brand new generator
- Same performance as a brand new generator
- Same durability and reliability as a brand new generator
- Same parts (and replacement parts) as a brand new generator
- Full-load tested and certified to meet specifications (available)
- Upgraded features better than the original brand new generator
- Lower price than a brand new generator
- Ability to extend original capital investment by remanufacturing the same generator frame multiple times



Contact the GEQ Sales Engineering Team to assist you in remanufacturing and outfitting your generator for optimum performance for your unique application.

STATOR UPGRADE

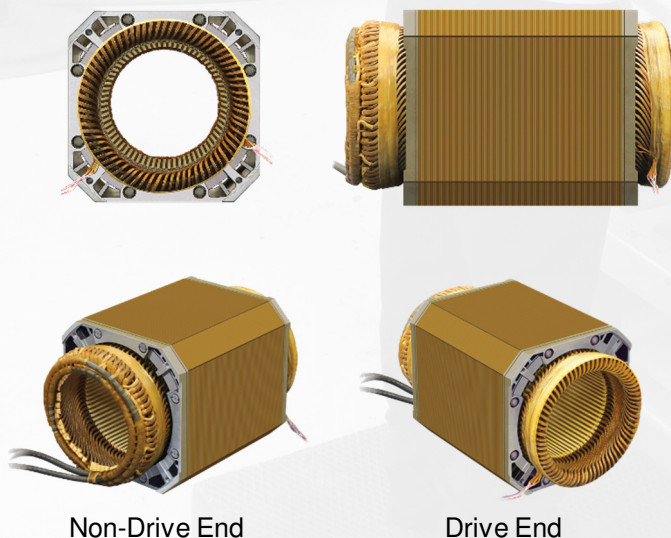
400HP form-wound motor stator upgrade for a NOV TDS11 top drive system.

This motor stator upgrade replaces the factory random-wound motor design. GEQ manufactures the 400HP Form-Wound Motor Stator Upgrade, a technology which offers greater cooling capacity and longer motor life expectancy between top drive equipment replacement cycles. Plus, with the GEQ core exchange program (GEQ stator assets are always ready to install), downtime for motor rewind is cut from a typical 3-week rewind to a 1-week switch-out.

Gulf Electroquip (GEQ) developed this upgrade of the NOV TDS11 Top Drive System to overcome a common source of failures and rig shutdown - premature top drive motor failure by inferior motor design, poor insulation, excessive heat, and premature shorting within the stator windings. The GEQ 400HP Form-Wound Motor Stator Upgrade converts the factory motor design from a random-wound motor stator design to a form-wound motor stator design, without altering the asset outer dimensions in the top drive unit. The process: OEM random-wound stator out / GEQ form-wound stator in. The increased durability and longer service life provides greater certainty of performance and durability.

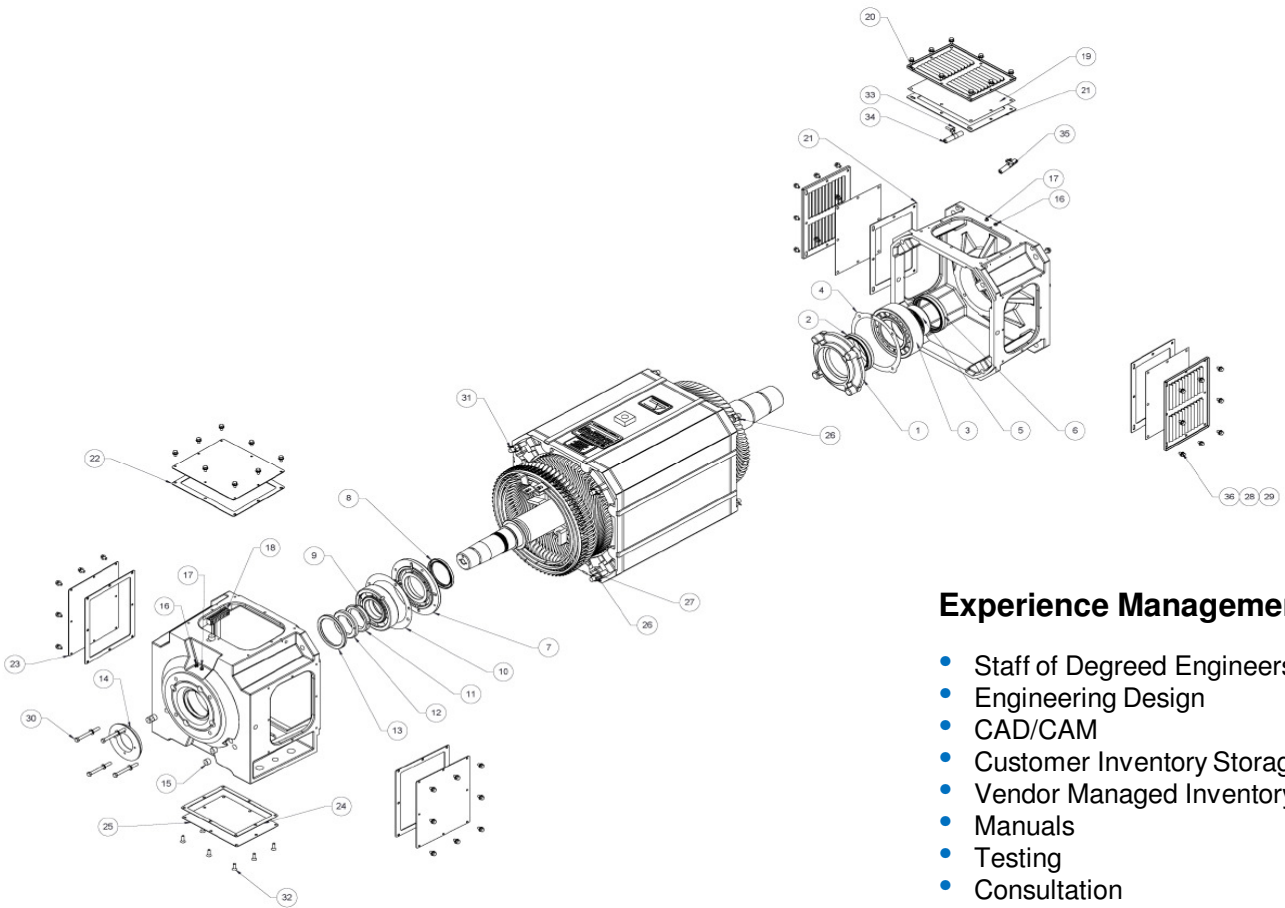


- GEQ Form-Wound Stator has more cooling and a better insulating system which results in longer motor life and decreased downtime
- Bearing upgrades available
- Resistance Temperature Detectors (RTDs) are optional
- GEQ full-load dynamometer testing available



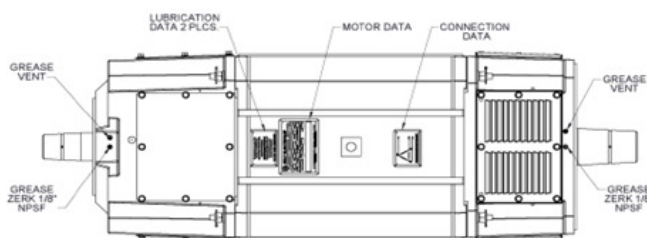
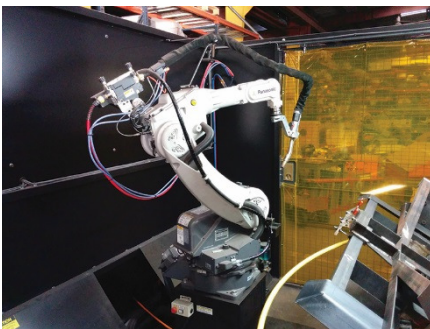
- All New Form-Wound Stator Upgrade
- Class H Insulation w/Kapton, Mica Glass Tape
- Same Full-Load Amps, Volts and Torque
- Left-Hand, Right-Hand, or Universal Configuration
- Standard Thermal Protectors
- Cooler Running Motor
- Longer Life Expectancy
- Less Down Time
- Quick Core Exchange

GEQ TECHNOLOGY

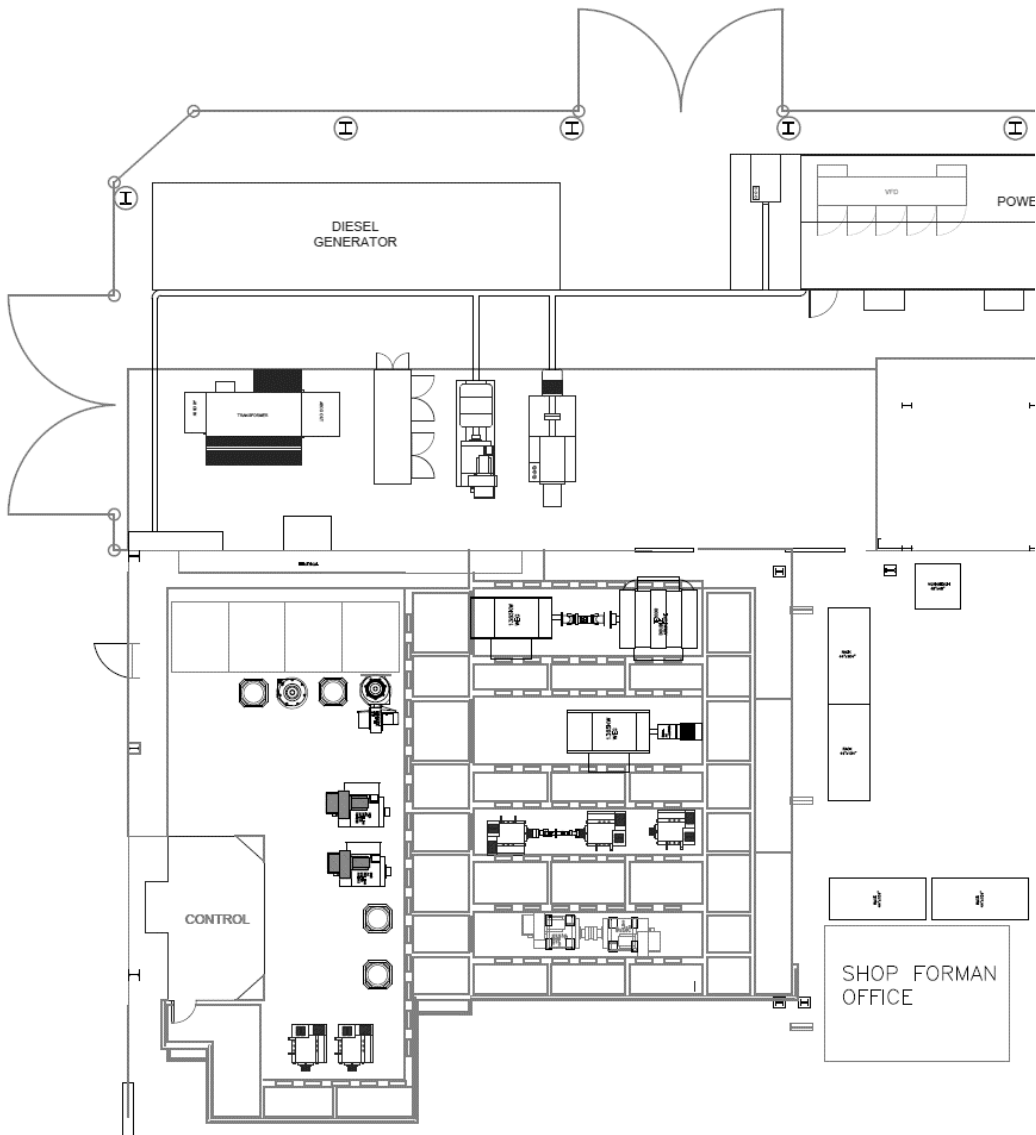


Experience Management

- Staff of Degreed Engineers:
- Engineering Design
- CAD/CAM
- Customer Inventory Storage
- Vendor Managed Inventory
- Manuals
- Testing
- Consultation
- Safety

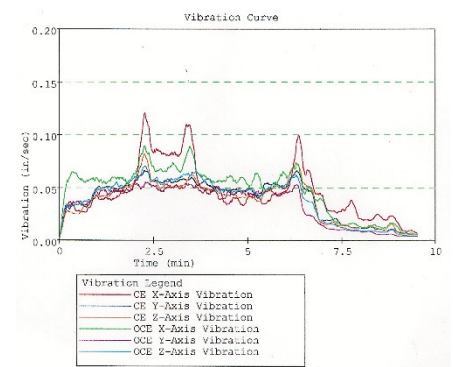


GEQ LOAD TESTING

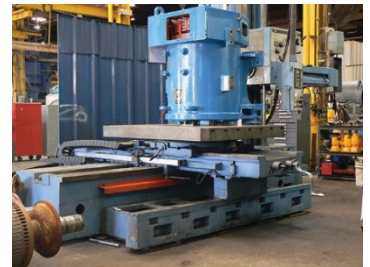
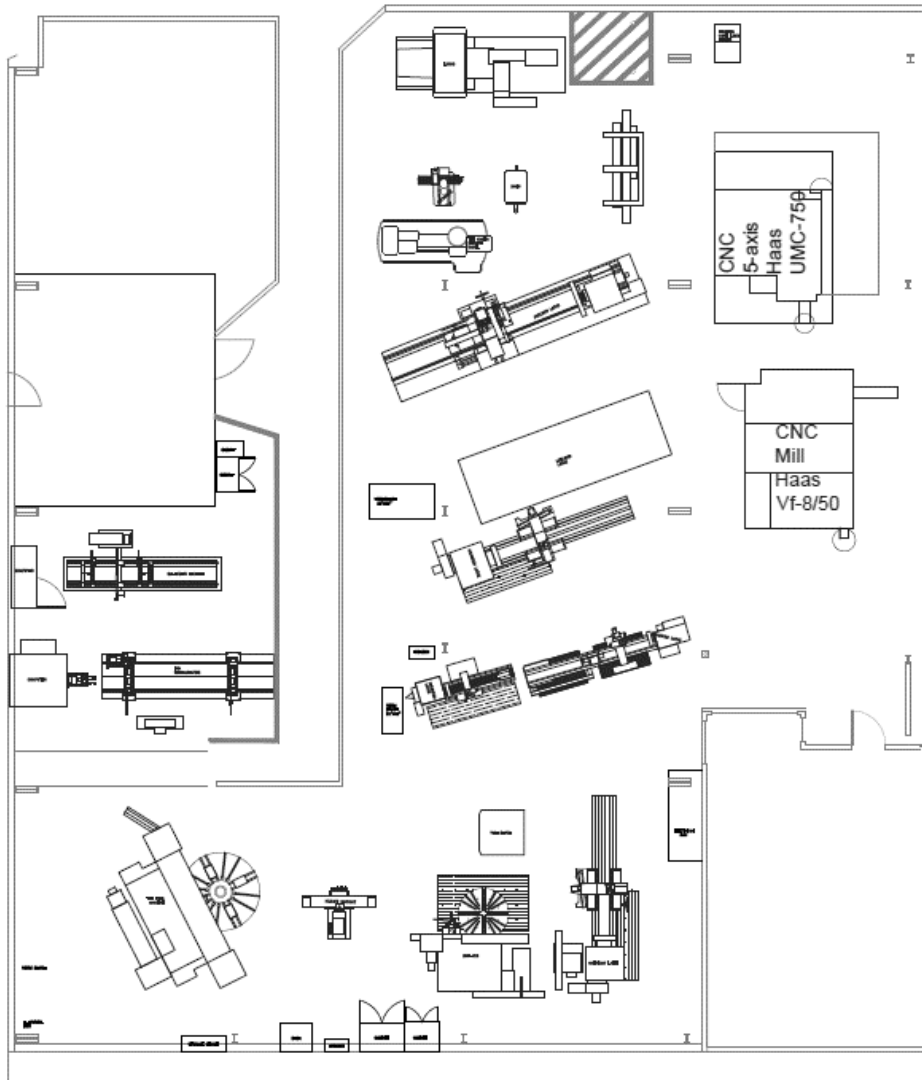


Test Lab

- AC and DC Equipment
- Static and No Load
- Full Load Testing
- Dynamometer Load
- Orientation
- Computer Recording
- Sinusoidal and VFD
- Witness
- Static Testing
- Regulatory | Certification



GEQ MACHINE SHOP



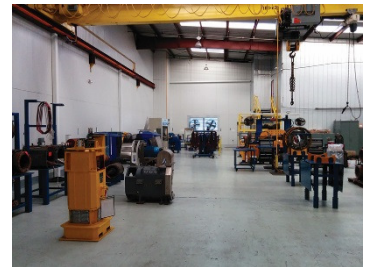
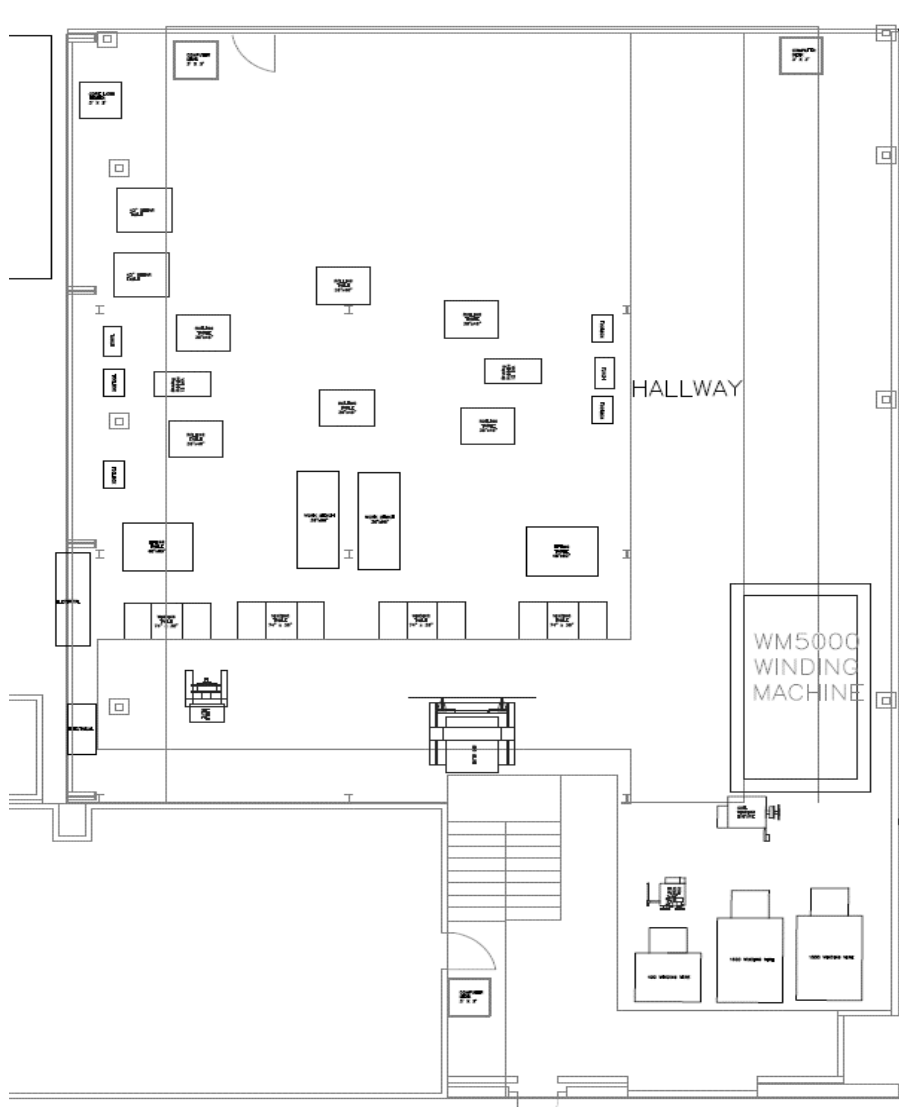
CNC Machine Shop

- CNC Large Lathe Turret
- CNC Medium and Small with Live Tooling Turret
- CNC Large Vertical Mill
- CNC Medium Universal Vertical Mill

Manual Machine Shop

- (1) Large Vertical Lathe (2 meter table)
- (1) Medium Vertical Lathe (1 meter table) (2) Large Lathes
- (8) Medium Lathes
- (2) Vertical Machining centers
- (2) Broaches
- (1) High capacity shaft press

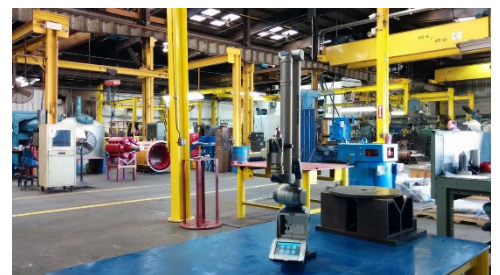
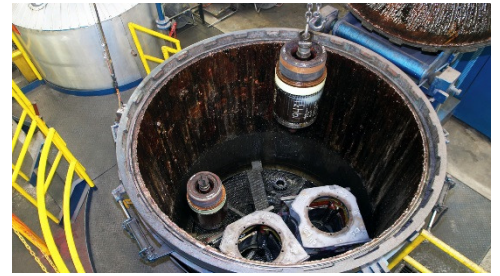
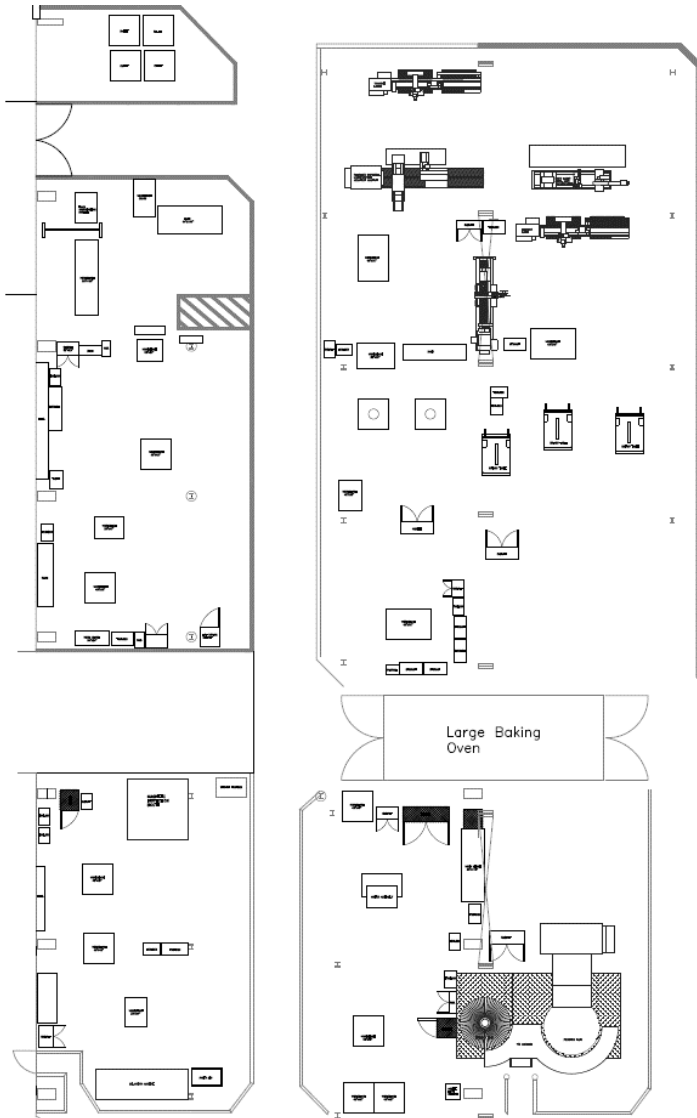
GEQ WINDING



Winding

- CNC AC and DC random coil manufacturing
- Manual AC and DC form coil manufacturing
- 6 stator winding stations (Future space for 12 more.)
- 1 rotor winding station
- Coming Jan 2016
 - Industrial level clean room
 - Climate Controlled

GEQ INSPECTION & ASSEMBLY



Inspection, Assembly & Encapsulation

- Cleaning
- Baking
- Mechanical Inspection
- Electrical Inspection
- Failure Analysis
- Mechanical Repair
- Replacement
- Balancing
- Winding
- Encapsulation
- Enclosures

Our Commitment to you.



Gulf Electroquip was founded over 65 years ago by Jim Petersen on the principle of providing you with innovative motor engineering, quality products, and unequalled service support to help keep your power equipment running efficiently and cost effectively. We have lived by this standard of excellence since the day we opened our doors."

Jim Petersen Jr, President

INDUSTRIES SERVED

Onshore O&G

Offshore O&G

Cement

Compression

Dredging

Mining

Paper

Petrochemical

Plastics

Recycling

Rubber

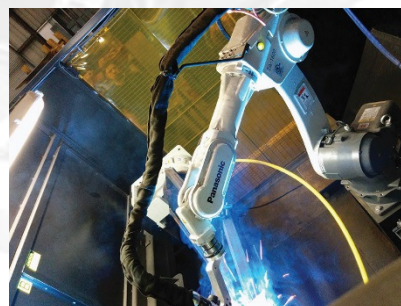
Transportation

Mission Statement – "At Gulf Electroquip LTD, we are committed to continuously improving our products & processes to provide the highest quality, maximum value and outstanding service to our customers."

We specialize in new, remanufactured and repaired AC and DC motors and generators. All our engineering is performed at our facility making sure that your exact specifications are met

We manage one of the largest motor and generator parts inventories with distribution support in the country.

Gulf Electroquip. Count on us!



713.675.2525 | sales@gulfelectroquip.com

GULFELECTROQUIP.COM