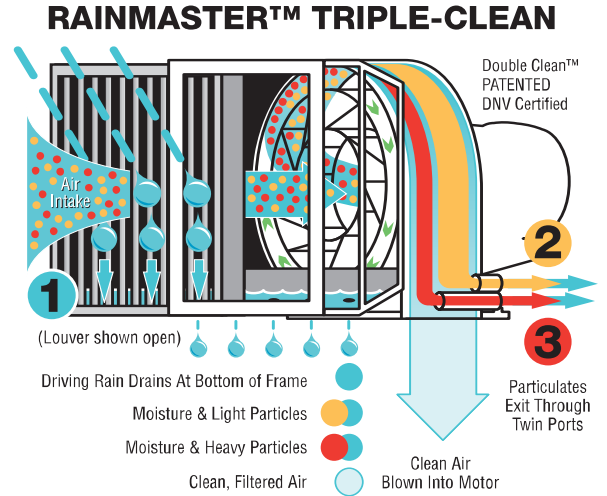
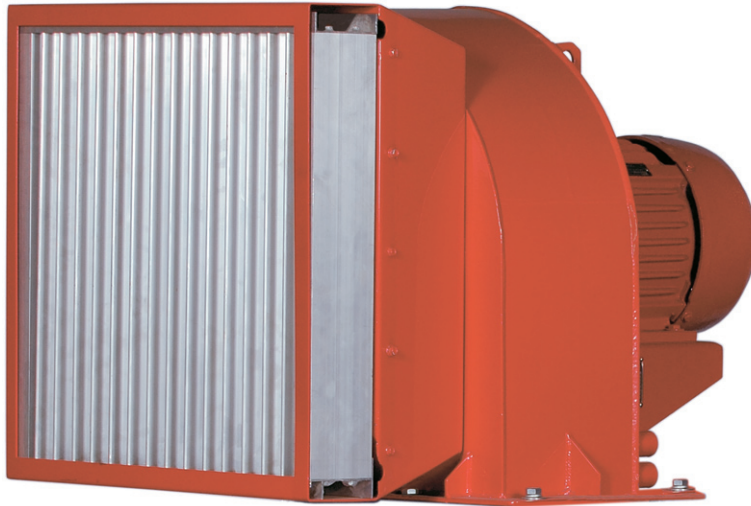




RAINMASTER™

Manufactured By Gulf Electroquip

TRIPLE-CLEAN MOTOR BLOWERS



Rainmaster™ shown above with side cover off. Stainless Steel Construction Available.

ALL MECHANICAL, 3-STAGE CLEANING TECHNOLOGY

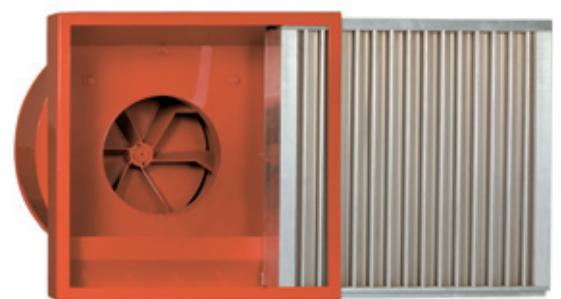
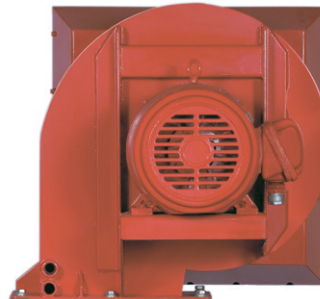
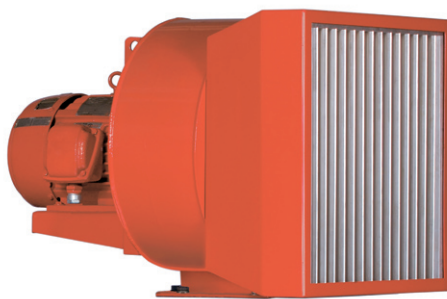
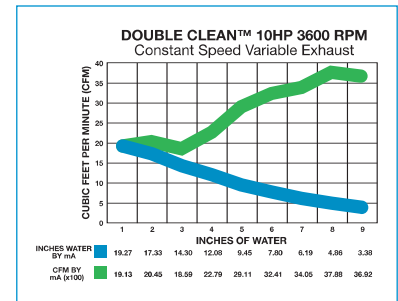
RAINMASTER™ MOTOR BLOWERS mechanically filter out water, sand, dirt, and other abrasive contaminants for longer motor life.

OUTER INTAKE CLEANING Louvered intake is 100% effective in reducing rain penetration from driving winds of 50 mph and a rain rate of 8" per hour.

FIRST STAGE CLEANING removes light particles and moisture.

SECOND STAGE CLEANING removes heavy particles and moisture.

ALL STAGES give you A COMBINED FILTERING PERFORMANCE OF 90%+ over unfiltered or non-cleaning blower products.



RAINMASTER™ Rainproof Air Intake may be purchased separately.

Rainmaster™ shown with aluminum Rain Louver open.



©2007 Gulf Electroquip LTD DoubleClean™ and RainMaster™ are trademarks of GEQ



1956 - 2006

24-HR PHONE 713-675-2525

WWW.GULFELECTROQUIP.COM

425 North Wayside, Houston TX 77020

E-mail: sales@gulfelectroquip.com

RAINMASTER™ MOTOR BLOWERS

Mechanically filter out sand, dirt, moisture and other abrasive contaminants for longer motor life. The benefit of this blower is to lower the contamination inside the drilling motor, yielding greater reliability, longer time between rebuilds and less downtime for the rig.

The blower is designed and built to clean the air while pushing it through the blower. It's an "element-less" type method that requires less maintenance than standard filtration and no more maintenance than a standard blower. The filtered material (dirt, dust, sand, water) is expelled through two (2) cleaning cycle exit ports on the side of the blower.



Stainless Steel Construction Available



All Blower Motors UL Certified

ADVANTAGES

- Increased brush life
- Increased time between rebuilds due to:
 - Decreased moisture penetration
 - Decreased contamination attacking insulation
 - Decreased commutator wear
- Reduced moisture in the motor produces:
 - Higher Megger readings
 - Decreased flash overs from less moisture and 90% less contamination
 - Less fuse change-outs
 - Yields longer SCR lifetime
 - Longer life between rebuilds
 - Longer insulation life for motor

SPECIFICATIONS AND CHARACTERISTICS

- Sizes: 5HP, 7.5HP, 10 HP and 15 HP
- Filtration Method: Patented Double Clean™
- Filtration Efficiency: 90+% on sand (Certified by DNV)

- 100% effective in reducing rain penetration of driving winds of 50 mph and a rain rate of 8" per hour.
- Application:
 - GE 752 1000 HP Factory Frame and Conversion Frame (one model fits both frames)
 - GE 752 High-Torque Factory Frame and Conversion Frame (one model fits both frames)
 - EMD79 and 89 DC Motors
 - Reliance and Toshiba drilling motors
- Construction: Standard steel and stainless
- Remote mount is available
- Quiet Clean Blowers are available
- Speed: 3600 RPM
- Motor:
 - 230, 460 or 575 Volts, 3-Ph, 60 Hz
 - UL certified - "XP" rated for CL 1 Grp D, Div 2 motor
- Enclosure: TEFC/XP Cast Iron Construction
- Service Factor: 1.15

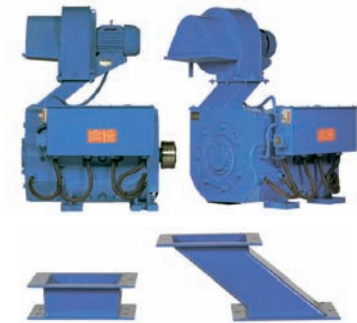


CNC Precision / Quality Fabrication



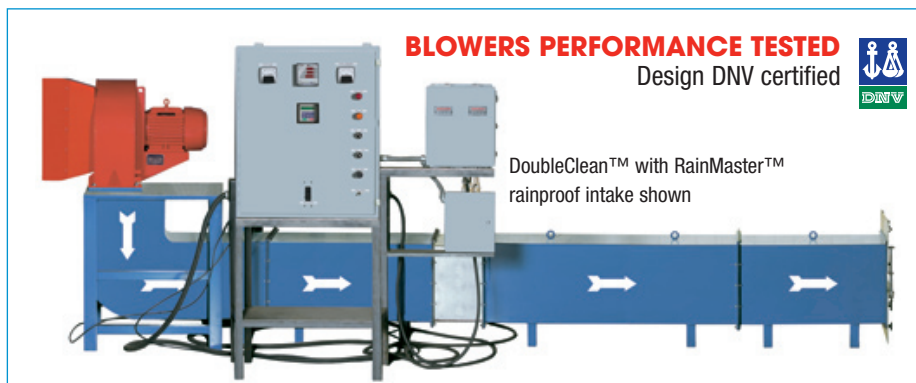
RAINPROOF ALL YOUR MOTORS: RAINMASTER™ BLOWER INTAKE

(See GEQ WEBSITE for details)



BLOWER OFFSETS AND ADAPTERS

(See GEQ WEBSITE for details)



NEED MOTOR & BLOWER PARTS? PARTS COUNTER

(See GEQ WEBSITE for details)